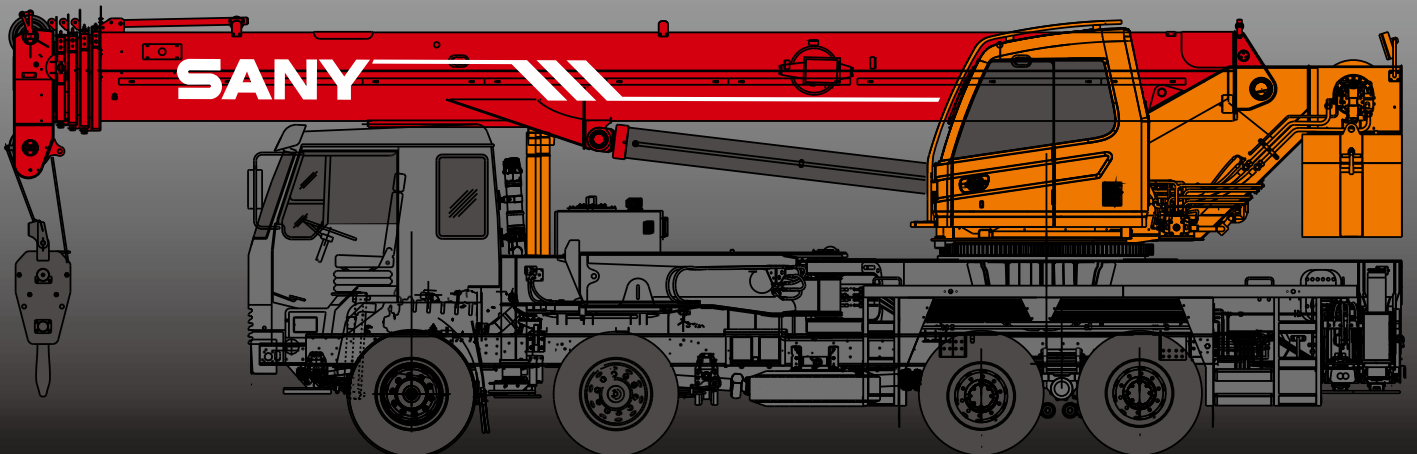


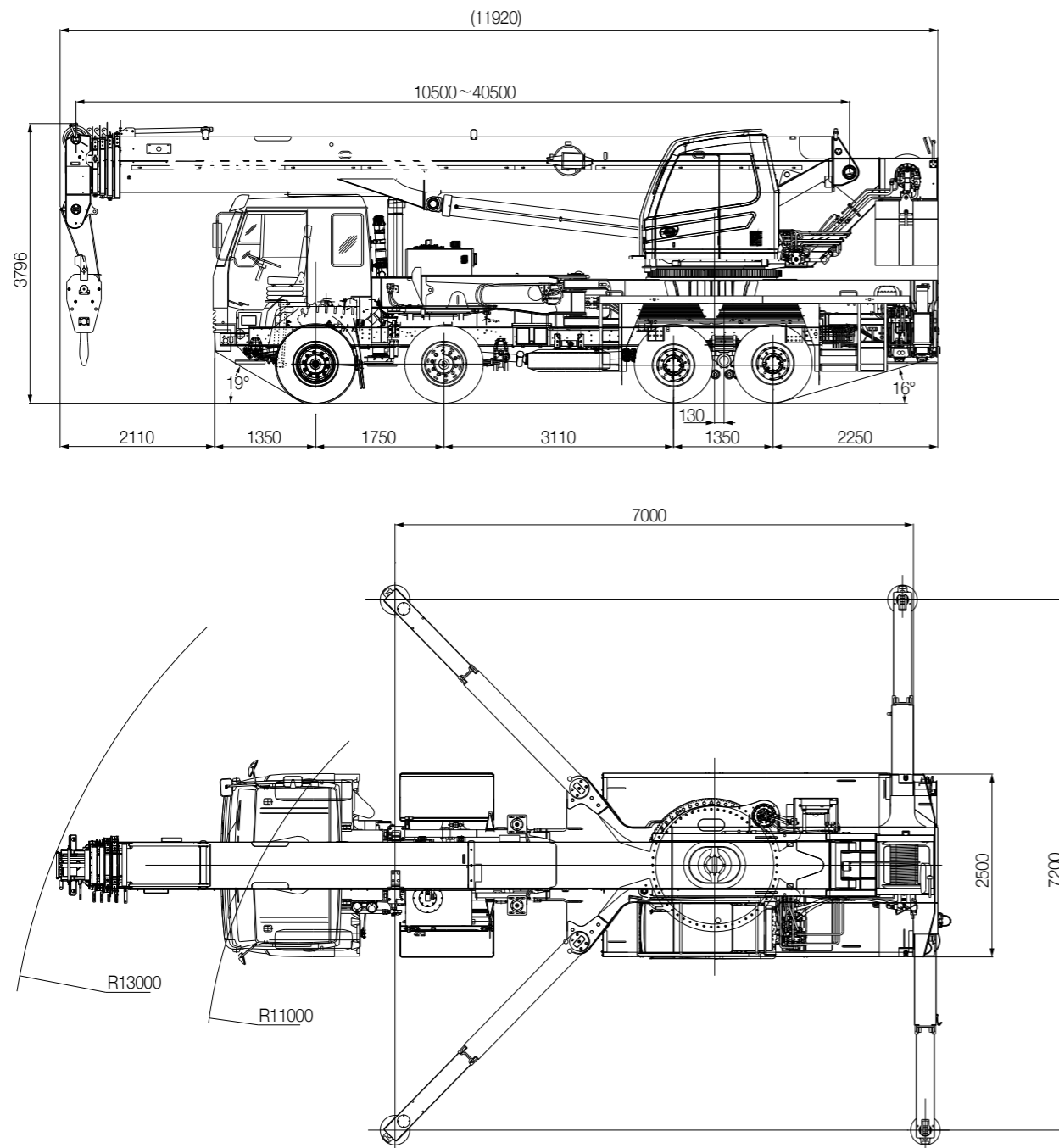
SPC400

SPC400 TRUCK CRANE
40 TONS LIFTING CAPACITY

Quality Changes the World

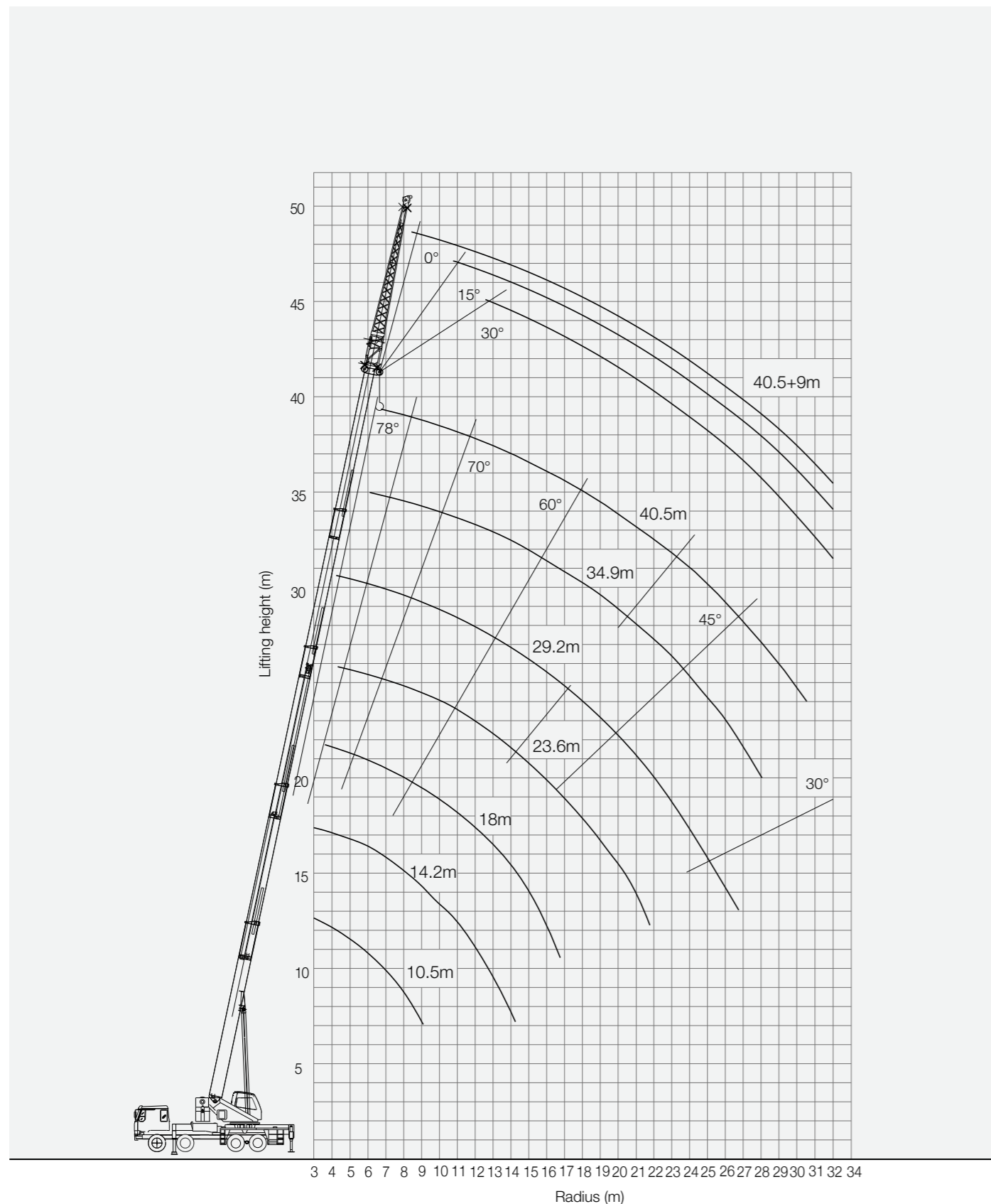


SANY



| Type | Item | Parameter | |
|-----------------------|--|---|----------------------------|
| Capacity | Max. lifting capacity | 40t | |
| Dimensions | Overall length | 11920mm | |
| | Overall width | 2500mm | |
| | Overall height | 3796mm | |
| | Axle distance | Axle-1,2 Axle-2,3 Axle-3,4 | 1750mm 3110mm 1350mm |
| Weight | Overall weight | 30300kg | |
| | Axle load | Front axle Rear Axle | 11750kg 18550kg |
| | Rated power | | 160kW/2500rpm |
| | Rated torque | | 836N.m/1500rpm |
| Traveling | Max.traveling speed | | 75km/h |
| | Turning radius | Min.turning radius Min.turning radius of boom head | 11m 13m |
| | Wheel formula | | 8×4 |
| | Approach angle | | 19° |
| | Departure angle | | 16° |
| | Max.gradeability | | 36% |
| Main Performance Data | Min.rated range | | 3m |
| | Boom section | | 5 |
| | Boom shape | | U-shaped |
| | Max.lifting moment | Base boom Full-extend boom | 1400kN·m 800kN·m |
| | Boom length | Base boom Full-extend boom | 10.5m 40.5m |
| | Jib length / (Option) | | 9m |
| | Outrigger span (Longitudinal×Transversal) | | 7×7.2m |
| Working speed | Max.single rope lifting speed of winch (no load) | | 115m/min |
| | Full extension/retraction time of boom | | 160s/110s |
| | Full lifting/descending time of boom | | 70s/60s |
| | Slewing speed | | 1.8r/min |

SPC400 Working radius-lifting height curve



Unit:Kg

Prerequisites:

- ① Boom operating condition(fully extended boom length),min.length is 10.5 and.max.length is 40.5m
- ② The span of outrigger is7×7.2m
- ③ 360° rotation is applied
- ④ Counterweight is 1.6T

| Working range(m) | Main boom | | | | | | | Working range(m) |
|--------------------------|-----------|-------|-------|-------|-------|-------|------|------------------|
| | 10.5 | 14.2 | 18 | 23.6 | 29.2 | 34.9 | 40.5 | |
| 3 | 40000 | 33000 | | | | | | 3 |
| 3.5 | 36000 | 33000 | 22000 | | | | | 3.5 |
| 4 | 33000 | 30000 | 22000 | | | | | 4 |
| 4.5 | 31000 | 28000 | 22000 | 17600 | | | | 4.5 |
| 5 | 27000 | 24000 | 22000 | 17200 | | | | 5 |
| 5.5 | 23000 | 21000 | 19000 | 16300 | 13500 | | | 5.5 |
| 6 | 20000 | 19000 | 17000 | 16000 | 13000 | | | 6 |
| 6.5 | 17000 | 16000 | 15000 | 14000 | 12500 | | | 6.5 |
| 7 | 15000 | 14000 | 13000 | 12500 | 12000 | 11000 | | 7 |
| 8 | 12000 | 11000 | 10500 | 11000 | 10000 | 9500 | | 8 |
| 9 | | 8800 | 8700 | 9300 | 8500 | 7500 | 7500 | 9 |
| 10 | | 7500 | 7100 | 7600 | 7500 | 6500 | 6000 | 10 |
| 12 | | 5200 | 4900 | 5400 | 5600 | 5500 | 5200 | 12 |
| 14 | | | 3500 | 4000 | 4200 | 4100 | 4100 | 14 |
| 16 | | | 2400 | 3000 | 3100 | 3200 | 3200 | 16 |
| 18 | | | | 2000 | 2300 | 2500 | 2500 | 18 |
| 20 | | | | 1400 | 1700 | 1900 | 1900 | 20 |
| 22 | | | | | 1200 | 1300 | 1300 | 22 |
| 24 | | | | | | 900 | 900 | 24 |
| Number of lines | 10 | 10 | 8 | 6 | 4 | 4 | 3 | Number of lines |
| Telescoping condition(%) | | | | | | | | |
| II | 0% | 50% | 100% | 100% | 100% | 100% | 100% | II |
| III | 0% | 0% | 0% | 25% | 50% | 75% | 100% | III |
| IV | 0% | 0% | 0% | 25% | 50% | 75% | 100% | IV |
| V | 0% | 0% | 0% | 25% | 50% | 75% | 100% | V |

1. Values listed in the table refer to rated lifting capacity measured at flat and solid ground under the lever state of the crane.
2. Value above heavy line shall be determined by strength of the crane and under this line shall be determined by stability of the crane.
3. Rated load values determined by stability shall comply with ISO 4305.
4. Rated lifting capacity listed in the table included weights of lifting hooks (360kg of hook)and hangers.
5. If actual boom length and range are between two values specified in the table, larger value will determine the lifting capacity.

Unit:Kg

Prerequisites:

- ① Boom operating condition(fully extended boom length),min.length is 10.5 and.max.length is 40.5m
- ② The span of outrigger is7×7.2m
- ③ 360° rotation is applied
- ④ Counterweight is 4.8T

| Working range(m) | Main boom | | | | | | | Working range(m) |
|--------------------------|-----------|-------|-------|-------|-------|-------|------|------------------|
| | 10.5 | 14.2 | 18 | 23.6 | 29.2 | 34.9 | 40.5 | |
| 3 | 40000 | 33000 | | | | | | 3 |
| 3.5 | 36000 | 33000 | 22000 | | | | | 3.5 |
| 4 | 33000 | 30000 | 22000 | | | | | 4 |
| 4.5 | 31000 | 28000 | 22000 | 17600 | | | | 4.5 |
| 5 | 28000 | 25000 | 22000 | 17200 | | | | 5 |
| 5.5 | 25000 | 23000 | 20500 | 16300 | 13500 | | | 5.5 |
| 6 | 22000 | 21000 | 19000 | 16000 | 13000 | | | 6 |
| 6.5 | 19000 | 18000 | 17000 | 15000 | 12500 | | | 6.5 |
| 7 | 17000 | 16000 | 15000 | 14500 | 12000 | 11000 | | 7 |
| 8 | 14000 | 13000 | 12000 | 12000 | 11000 | 10000 | | 8 |
| 9 | | 10000 | 9500 | 10000 | 9500 | 9000 | 7500 | 9 |
| 10 | | 8500 | 8000 | 8500 | 8000 | 7500 | 7000 | 10 |
| 12 | | 6500 | 6000 | 6500 | 6000 | 6000 | 5500 | 12 |
| 14 | | | 4000 | 4500 | 5000 | 5000 | 5000 | 14 |
| 16 | | | 3000 | 3700 | 3900 | 4000 | 4100 | 16 |
| 18 | | | | 2800 | 3100 | 3200 | 3200 | 18 |
| 20 | | | | 2200 | 2500 | 2600 | 2600 | 20 |
| 22 | | | | | 2000 | 2100 | 2100 | 22 |
| 24 | | | | | 1500 | 1700 | 1700 | 24 |
| 26 | | | | | 1100 | 1400 | 1400 | 26 |
| 28 | | | | | | 1100 | 1100 | 28 |
| 30 | | | | | | 800 | 800 | 30 |
| Number of lines | 10 | 10 | 8 | 6 | 4 | 4 | 3 | Number of lines |
| Telescoping condition(%) | | | | | | | | |
| II | 0% | 50% | 100% | 100% | 100% | 100% | 100% | II |
| III | 0% | 0% | 0% | 25% | 50% | 75% | 100% | III |
| IV | 0% | 0% | 0% | 25% | 50% | 75% | 100% | IV |
| V | 0% | 0% | 0% | 25% | 50% | 75% | 100% | V |

1. Values listed in the table refer to rated lifting capacity measured at flat and solid ground under the lever state of the crane.
2. Value above heavy line shall be determined by strength of the crane and under this line shall be determined by stability of the crane.
3. Rated load values determined by stability shall comply with ISO 4305.
4. Rated lifting capacity listed in the table included weights of lifting hooks (360kg of hook)and hangers.
5. If actual boom length and range are between two values specified in the table, larger value will determine the lifting capacity.

Unit:Kg

Prerequisites:

- ① Boom operating condition(fully extended boom length),min.length is 10.5 and.max.length is 40.5m
- ② The span of outrigger is7×7.2m
- ③ 360° rotation is applied
- ④ Counterweight is 8T

| Working range(m) | Main boom | | | | | | | Working range(m) |
|--------------------------|-----------|-------|-------|-------|-------|-------|------|------------------|
| | 10.5 | 14.2 | 18 | 23.6 | 29.2 | 34.9 | 40.5 | |
| 3 | 40000 | 33000 | | | | | | 3 |
| 3.5 | 36000 | 33000 | 22000 | | | | | 3.5 |
| 4 | 33000 | 30000 | 22000 | | | | | 4 |
| 4.5 | 31000 | 28000 | 22000 | 17600 | | | | 4.5 |
| 5 | 28000 | 25000 | 22000 | 17200 | | | | 5 |
| 5.5 | 25000 | 23000 | 20500 | 16300 | 13500 | | | 5.5 |
| 6 | 23000 | 21000 | 19000 | 16000 | 13000 | | | 6 |
| 6.5 | 21600 | 19000 | 18000 | 15000 | 12500 | | | 6.5 |
| 7 | 19000 | 17500 | 17000 | 14500 | 12000 | 11000 | | 7 |
| 8 | 15000 | 15000 | 14500 | 12500 | 11000 | 10000 | | 8 |
| 9 | | 12500 | 12000 | 11500 | 10000 | 9000 | 7500 | 9 |
| 10 | | 11000 | 10500 | 10000 | 9500 | 8000 | 7000 | 10 |
| 12 | | 7700 | 7900 | 8000 | 7600 | 6500 | 6000 | 12 |
| 14 | | | 6100 | 6400 | 6300 | 6200 | 5500 | 14 |
| 16 | | | 4000 | 5000 | 5000 | 5000 | 5000 | 16 |
| 18 | | | | 3900 | 4200 | 4200 | 4200 | 18 |
| 20 | | | | 3100 | 3500 | 3400 | 3400 | 20 |
| 22 | | | | | 2900 | 2900 | 2900 | 22 |
| 24 | | | | | 2200 | 2400 | 2400 | 24 |
| 26 | | | | | 1750 | 1950 | 2000 | 26 |
| 28 | | | | | | 1600 | 1700 | 28 |
| 30 | | | | | | 1250 | 1400 | 30 |
| 32 | | | | | | 1000 | 1100 | 32 |
| 34 | | | | | | | 900 | 34 |
| Number of lines | 10 | 10 | 8 | 6 | 4 | 4 | 3 | Number of lines |
| Telescoping condition(%) | | | | | | | | |
| II | 0% | 50% | 100% | 100% | 100% | 100% | 100% | II |
| III | 0% | 0% | 0% | 25% | 50% | 75% | 100% | III |
| IV | 0% | 0% | 0% | 25% | 50% | 75% | 100% | IV |
| V | 0% | 0% | 0% | 25% | 50% | 75% | 100% | V |

1. Values listed in the table refer to rated lifting capacity measured at flat and solid ground under the lever state of the crane.
2. Value above heavy line shall be determined by strength of the crane and under this line shall be determined by stability of the crane.
3. Rated load values determined by stability shall comply with ISO 4305.
4. Rated lifting capacity listed in the table included weights of lifting hooks (360kg of hook)and hangers.
5. If actual boom length and range are between two values specified in the table, larger value will determine the lifting capacity.