

10-175 175 11 2 160/10

**MANNESMANN  
DEMAG**

**All Terrain Crane**

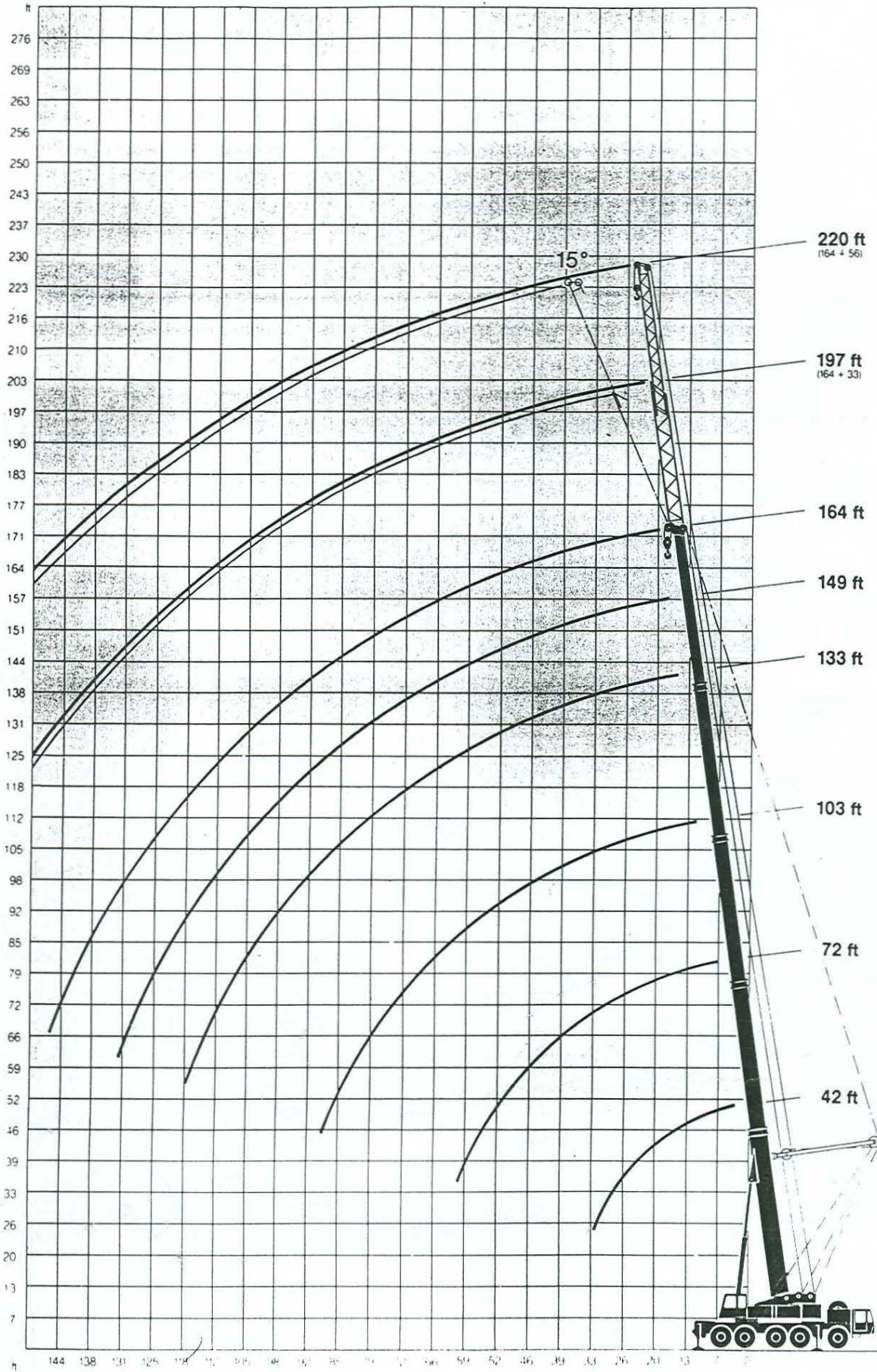
**AC 335**



# Working Ranges

- Main boom
- Tele-Extension Jib

42 ft - 164 ft  
33 ft - 56 ft

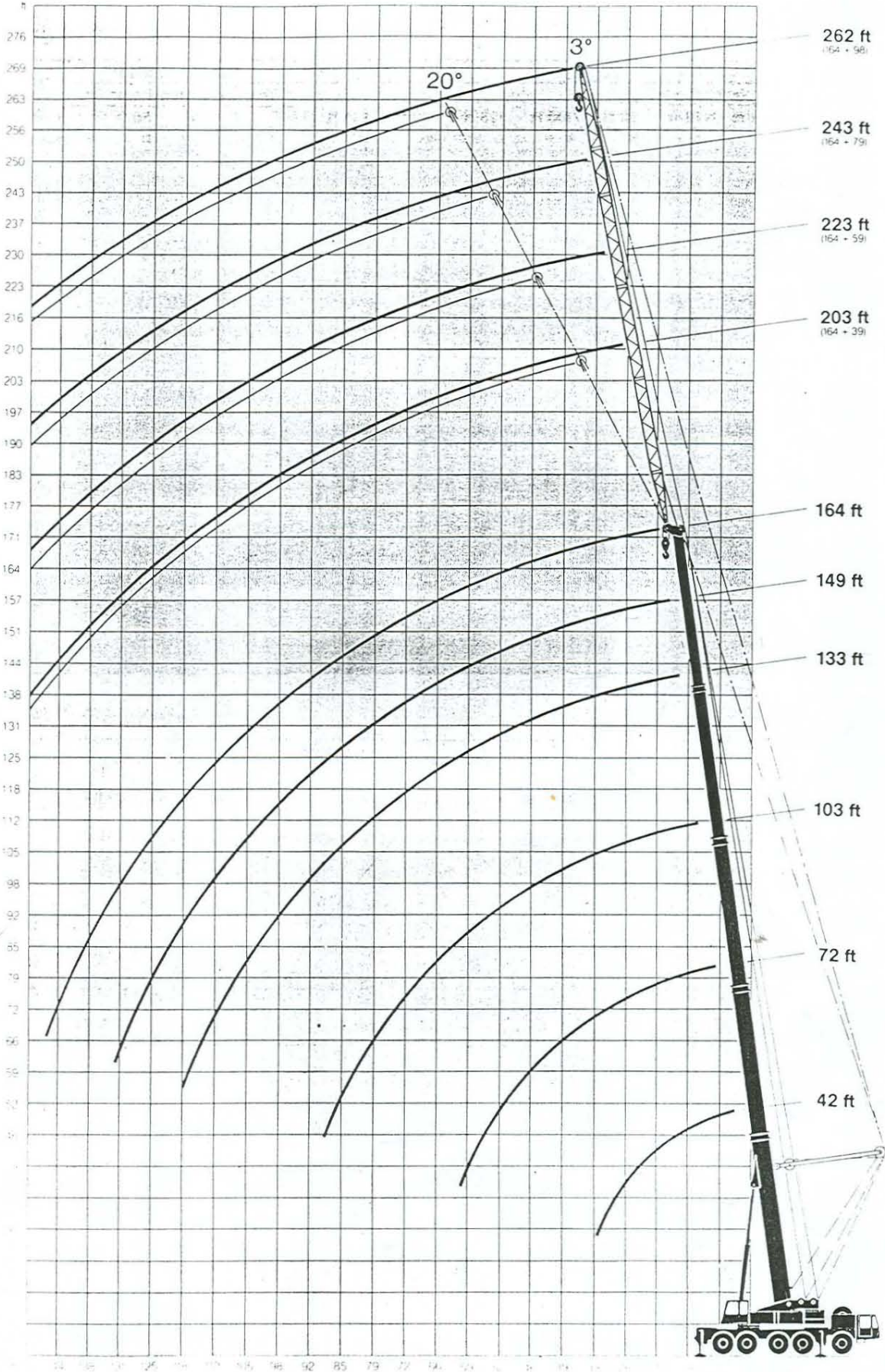




# Working Ranges

- Main boom
- Fixed fly jib

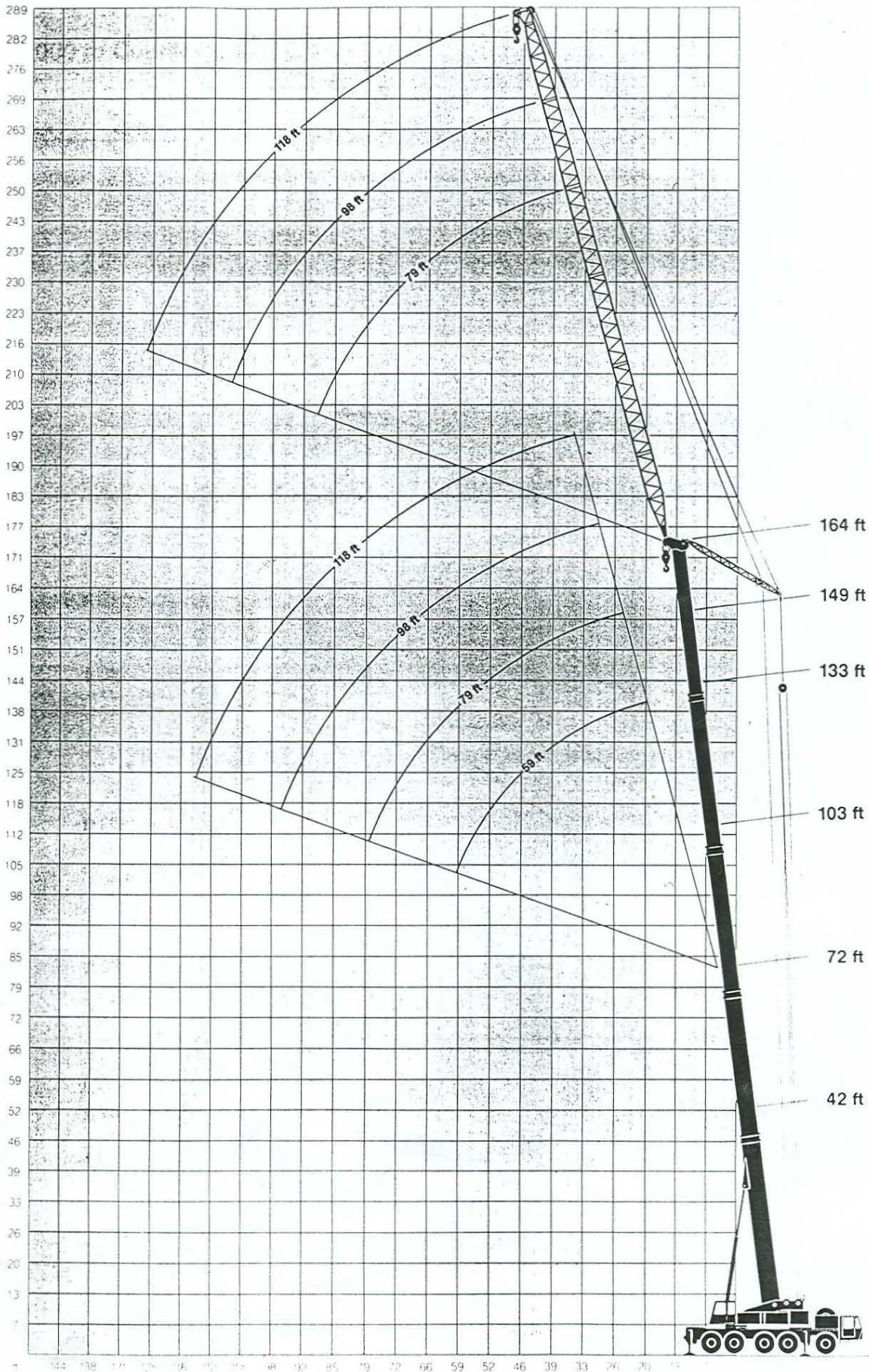
42 ft - 164 ft  
39 ft, 59 ft, 79 ft, 98 ft





# Working Ranges

— luffing jib: 59 ft, 79 ft, 98 ft, 118 ft



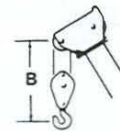
# Specifications

## Carrier Performance

Forward Speeds	0 – 44 mph	Reverse Speeds	3.8 mph
Ground clearance			14"
Tail swing – with 24,000 lb or 60,000 lb counterweight			16'4"
– with 88,000 lb counterweight			16'10"

## Working Speeds (infinitely variable)

Units	Line Speed	Rope Pull, Single Line	Length of Hoist Rope
Main Hoist	max. 394 ft/min	18,298 lb	984 ft
Secondary Hoist	max. 394 ft/min	18,298 lb	722 ft
Swing	max. 2 RPM		
Telescoping from 42 ft to 133 ft			80 s
Boom Elevation from –2° to 83°			60 s



## Hook-Block/Crane Hook

Capacity		Number of Sheaves	Number of Lines	Weight	"B"
max.	85%				
353,000 lb	331,000 lb	9	18	3,086 lb	8 ft
221,000 lb	201,000 lb	5	11	2,681 lb	8 ft
139,000 lb	128,000 lb	3	7	2,326 lb	8 ft
88,000 lb	55,000 lb	1	3	1,676 lb	8 ft
28,000 lb	18,000 lb	Crane Hook	1	816 lb	6 ft



# Lifting Capacities in 1,000 lb

with outriggers – 360°

## 24,000 lb Counterweight

85%

Main Boom										Main Boom 164 ft			
Radius	42 ft		72 ft		103 ft		133 ft		149 ft		164 ft		Radius
	ft	lb	ft	lb	ft	lb	ft	lb	ft	lb	ft	lb	
9	309.0**	-	-	-	-	-	-	-	-	-	-	-	9
11	282.1	-	198.0*	-	-	-	-	-	-	-	-	-	11
13	249.1	-	198.0*	-	132.0	-	-	-	-	-	-	-	13
15	220.0	35.2	198.0*	34.0	132.0	-	-	-	-	-	-	-	15
16	194.0	31.0	187.3*	30.4	129.1	-	-	-	-	-	-	-	16
20	156.3	25.1	143.2*	24.4	119.0	79.0	-	-	-	-	-	-	20
23	130.0	20.7	113.9	19.8	108.0	72.7	62.0	-	-	-	-	-	23
26	110.2	17.2	95.9	16.3	94.7	67.6	58.8	46.0	-	-	-	-	26
29	89.0	14.3	77.3	13.2	80.4	62.8	54.8	46.0	-	-	-	-	29
33	-	-	64.1	10.8	71.6	58.4	51.1	44.0	-	-	-	-	33
39	-	-	49.6	7.0	54.0	49.6	44.5	39.6	25.0	-	-	-	39
46	-	-	36.3	4.2	41.6	39.6	39.6	35.4	23.8	18.0	-	-	46
52	-	-	28.6	-	32.4	31.9	33.2	31.5	22.2	18.0	-	-	52
59	-	-	22.9	-	25.5	25.1	26.6	26.4	20.7	17.1	-	-	59
66	-	-	-	-	20.7	19.8	21.6	21.1	18.9	16.0	-	-	66
72	-	-	-	-	16.3	15.8	17.4	16.9	16.9	15.2	-	-	72
79	-	-	-	-	13.2	12.3	14.1	13.6	14.3	14.1	-	-	79
85	-	-	-	-	10.5	9.7	11.4	10.8	11.6	12.7	-	-	85
92	-	-	-	-	-	7.4	9.0	8.5	9.0	11.0	-	-	92
98	-	-	-	-	-	-	5.7	6.6	7.0	9.2	-	-	98
105	-	-	-	-	-	-	3.9	5.2	5.2	10.1	-	-	105
111	-	-	-	-	-	-	2.6	4.1	3.7	7.4	-	-	111
118	-	-	-	-	-	-	-	-	4.0	5.9	-	-	118
125	-	-	-	-	-	-	-	-	2.6	4.4	-	-	125
131	-	-	-	-	-	-	-	-	-	2.6	-	-	131
138	-	-	-	-	-	-	-	-	-	-	-	-	138
144	-	-	-	-	-	-	-	-	-	-	-	-	144
150	-	-	-	-	-	-	-	-	-	-	-	-	150
157	-	-	-	-	-	-	-	-	-	-	-	-	157
164	-	-	-	-	-	-	-	-	-	-	-	-	164
170	-	-	-	-	-	-	-	-	-	-	-	-	170
177	-	-	-	-	-	-	-	-	-	-	-	-	177
184	-	-	-	-	-	-	-	-	-	-	-	-	184

## w/o Counterweight

85%

Main Boom													
Radius	42 ft		72 ft		103 ft		133 ft		149 ft		164 ft		Radius
	ft	lb	ft	lb	ft	lb	ft	lb	ft	lb	ft	lb	
9	276.0	-	-	-	-	-	-	-	-	-	-	-	9
11	244.7	-	176.0*	-	-	-	-	-	-	-	-	-	11
13	209.4	-	176.0*	-	121.0	-	-	-	-	-	-	-	13
15	182.9	26.5	176.0*	25.5	117.5	-	-	-	-	-	-	-	15
16	160.9	23.1	158.7*	22.2	113.9	-	-	-	-	-	-	-	16
20	121.2	18.0	121.2	17.0	100.7	70.0	-	-	-	-	-	-	20
23	85.9	14.1	85.9	13.2	83.7	64.5	55.7	-	-	-	-	-	23
26	63.9	11.0	61.7	10.1	63.9	59.7	52.0	40.0	-	-	-	-	26
29	48.5	8.6	48.5	7.5	50.7	50.7	48.5	40.0	-	-	-	-	29
33	-	-	39.0	5.5	41.2	40.7	41.6	39.0	-	-	-	-	33
39	-	-	26.4	-	28.4	27.9	31.0	29.1	-	-	-	-	39
46	-	-	18.7	-	20.5	20.0	22.9	21.1	-	-	-	-	46
52	-	-	13.6	-	15.4	14.7	17.1	15.8	-	-	-	-	52
59	-	-	10.1	-	11.6	11.0	13.0	12.1	-	-	-	-	59
66	-	-	-	-	8.8	8.3	9.9	9.2	-	-	-	-	66
72	-	-	-	-	6.6	5.9	7.0	6.8	-	-	-	-	72
79	-	-	-	-	4.4	3.7	5.0	4.6	-	-	-	-	79
85	-	-	-	-	2.8	1.9	3.3	3.0	-	-	-	-	85

\* only pin-connected

\*\* with -heavy lift- accessories

\*\*\* over rear -on tyres

# Lifting Capacities with Superlift in 1,000 lb with outriggers – 360°

60,000 lb Counterweight

85%

Radius ft	Main Boom					
	42 ft lb	72 ft lb	103 ft lb	133 ft lb	149 ft lb	164 ft lb
9	331.0**	-	-	-	-	-
11	299.8**	198.0	-	-	-	-
13	275.5	198.0	136.5	-	-	-
15	242.5	198.0	135.1	-	-	-
16	219.8	198.0	130.9	-	-	-
20	178.7	177.9	123.6	84.0	-	-
23	149.2	148.1	117.2	80.9	66.0	-
26	127.4	126.3	110.8	78.4	63.4	44.0
29	110.9	109.5	103.8	74.9	60.0	44.0
33	-	96.3	95.4	72.0	57.5	44.0
39	-	74.2	73.4	67.2	53.5	44.0
46	-	58.2	57.3	57.0	50.9	44.0
52	-	46.7	45.8	45.6	48.9	43.2
59	-	38.3	37.7	37.4	40.1	39.9
66	-	-	31.0	30.8	33.0	34.6
72	-	-	26.2	25.8	27.8	29.1
79	-	-	21.6	21.3	23.3	24.9
85	-	-	18.0	17.8	19.6	21.1
92	-	-	-	14.5	16.5	18.0
98	-	-	-	12.1	13.9	15.4
105	-	-	-	9.9	11.7	13.2
111	-	-	-	8.1	9.9	11.2
118	-	-	-	-	8.1	9.7
125	-	-	-	-	6.6	7.9
131	-	-	-	-	5.2	6.6
138	-	-	-	-	-	5.2
144	-	-	-	-	-	4.4
150	-	-	-	-	-	-
157	-	-	-	-	-	-
164	-	-	-	-	-	-
170	-	-	-	-	-	-
177	-	-	-	-	-	-
184	-	-	-	-	-	-

Radius ft	Main Boom 164 ft Tele-Extension-Boom 0°	
	33 ft lb	56 ft lb
9	-	-
11	-	-
13	-	-
15	-	-
16	-	-
20	-	-
23	-	-
26	-	-
29	-	-
33	-	-
39	25.0	-
46	24.0	17.5
52	23.5	17.5
59	22.7	17.5
66	22.0	17.5
72	21.1	16.3
79	20.0	15.6
85	19.1	14.5
92	18.3	13.8
98	15.8	13.0
105	13.4	12.3
111	11.4	11.6
118	9.7	11.0
125	8.1	9.9
131	6.6	8.3
138	5.3	7.0
144	4.4	6.1
150	3.3	5.0
157	2.4	4.2
164	-	3.3
170	-	2.6
177	-	-
184	-	-

\* without Superlift-Suspension!

\*\* only with add. attachment!



# Lifting Capacities with Superlift in 1,000 lb with outriggers – 360°

88,000 lb Counterweight

85%

Main Boom							Main Boom 164 ft Tele-Extension-Boom 0°		
Radius	42 ft	72 ft	103 ft	133 ft	149 ft	164 ft	33 ft	56 ft	Radius
ft	lb	lb	lb	lb	lb	lb	lb	lb	ft
9	331.0**	-	-	-	-	-	-	-	9
11	299.8**	198.0	-	-	-	-	-	-	11
13	275.5	198.0	136.5	-	-	-	-	-	13
15	255.7	198.0	135.1	-	-	-	-	-	15
16	233.7	198.0	130.9	-	-	-	-	-	16
20	199.2	193.6	123.6	84.0	-	-	-	-	20
23	168.4	167.3	117.2	80.9	66.0	-	-	-	23
26	144.1	142.8	110.8	78.4	63.4	44.0	-	-	26
29	125.6	124.3	103.8	74.9	60.0	44.0	-	-	29
33	-	109.5	98.5	72.0	57.5	44.0	-	-	33
39	-	87.9	85.0	67.2	53.5	44.0	25.0	-	39
46	-	72.7	71.8	62.6	50.9	44.0	24.0	17.5	46
52	-	61.0	59.5	58.2	49.3	43.2	23.5	17.5	52
59	-	51.3	50.7	50.7	47.3	40.5	22.7	17.5	59
66	-	-	42.3	42.5	44.0	38.5	22.0	16.9	66
72	-	-	36.3	36.3	37.9	37.4	21.1	16.3	72
79	-	-	31.3	31.3	32.8	34.1	20.0	15.6	79
85	-	-	27.3	27.1	27.7	30.0	19.1	14.5	85
92	-	-	-	23.3	25.1	26.4	18.2	13.8	92
98	-	-	-	20.0	21.8	23.1	16.9	13.0	98
105	-	-	-	17.6	19.1	20.2	16.0	12.3	105
111	-	-	-	15.2	16.5	18.0	15.4	11.6	111
118	-	-	-	-	14.5	15.8	14.3	11.0	118
125	-	-	-	-	12.7	14.1	13.6	10.5	125
131	-	-	-	-	11.4	12.3	12.7	10.1	131
138	-	-	-	-	-	11.0	11.2	9.7	138
144	-	-	-	-	-	9.9	9.9	9.0	144
150	-	-	-	-	-	-	8.5	8.5	150
157	-	-	-	-	-	-	7.7	8.1	157
164	-	-	-	-	-	-	6.6	7.7	164
170	-	-	-	-	-	-	-	7.0	170
177	-	-	-	-	-	-	-	6.1	177
184	-	-	-	-	-	-	-	5.2	184

\* without Superlift-Suspension!

\*\* only with add. attachment!

# Lifting Capacities on Fixed Fly Jib Boom (3°) and Superlift with outriggers – 360°

88,000 lb counterweight

85%

60,000 lb counterweight

85%

Fixed Fly Jib 3°				Fixed Fly Jib 3°					
Boom	Radius	39 ft	59 ft	Boom	Radius	39 ft	59 ft	79 ft	98 ft
	ft	lb	lb		ft	lb	lb	lb	lb
	33	22.7	-		33	22.7	-	-	-
	39	21.8	16.5		39	21.8	16.5	-	-
	46	21.1	15.8		46	21.1	15.8	13.2	-
	52	20.5	15.4		52	20.5	15.4	12.3	9.4
	59	20.0	15.0		59	20.0	15.0	11.9	9.2
	66	19.4	14.5		66	19.4	14.5	11.2	8.8
	72	18.5	14.1		72	18.5	14.1	11.0	8.3
	79	17.8	13.6		79	17.8	13.6	10.3	8.1
	85	17.1	13.2		85	17.1	13.2	9.9	7.7
	92	16.5	12.5		92	16.5	12.5	9.7	7.0
	98	15.8	12.1		98	15.8	12.1	9.2	6.6
	111	14.1	11.4		111	11.9	11.4	8.1	5.7
	125	12.3	10.3		125	8.3	9.4	7.0	5.0
	138	10.1	9.7		138	5.7	6.4	5.9	4.6
	150	8.6	8.3		150	3.7	4.4	4.4	4.1
	164	6.6	7.0		164	1.9	2.6	3.0	3.0
	170	5.2	6.1		170	-	1.9	2.4	2.8
	177	4.4	5.2		177	-	-	1.7	2.2



# Lifting Capacities in 1,000 lb

with outriggers – 360°

## on Luffing Fly Jib

24,000 lb counterweight

75%

Boom	Radius	Luffing Fly Jib				
		59 ft	79 ft	98 ft	118 ft	
	ft	lb	lb	lb	lb	
72 ft	26	68.0	-	-	-	
	29	67.2	-	-	-	
	33	66.1	53.0	-	-	
	39	52.9	48.5	37.0	-	
	46	40.1	44.0	35.4	25.0	
	52	30.0	39.2	33.0	23.8	
	59	-	31.7	30.4	22.0	
	66	-	25.3	28.4	20.5	
	72	-	-	19.8	24.2	18.7
	79	-	-	14.1	20.0	16.9
	85	-	-	-	16.3	15.4
	92	-	-	-	12.7	13.8
	98	-	-	-	-	12.5
	105	-	-	-	-	10.8
111	-	-	-	-	8.1	
103 ft	29	50.0	-	-	-	
	33	48.5	-	-	-	
	39	45.1	33.0	-	-	
	46	41.8	31.9	26.0	-	
	52	37.2	30.8	24.9	19.0	
	59	27.1	29.7	24.0	18.2	
	66	-	28.6	22.9	17.1	
	72	-	-	24.4	22.0	16.5
	79	-	-	18.5	20.9	16.0
	85	-	-	-	19.8	15.4
	92	-	-	-	16.3	15.0
	98	-	-	-	12.3	14.3
	105	-	-	-	-	13.4
	111	-	-	-	-	10.3
118	-	-	-	-	7.4	
125	-	-	-	-	-	
131	-	-	-	-	-	
133 ft	39	27.0	21.0	-	-	
	46	25.1	19.6	16.0	-	
	52	23.8	18.7	15.2	11.0	
	59	22.9	18.0	14.7	11.0	
	66	22.4	17.4	14.3	10.1	
	72	-	16.7	13.6	9.4	
	79	-	16.0	13.2	9.2	
	85	-	15.4	12.7	9.0	
	92	-	-	12.5	8.8	
	98	-	-	12.1	8.8	
	105	-	-	-	8.5	
	111	-	-	-	8.3	
	118	-	-	-	7.9	
	125	-	-	-	-	
131	-	-	-	-		
149 ft	39	22.0	16.0	-	-	
	46	20.9	14.9	11.0	-	
	52	19.8	14.3	9.9	5.0	
	59	19.1	13.8	9.7	5.0	
	66	18.2	13.4	9.2	4.8	
	72	-	13.0	9.0	4.6	
	79	-	12.5	9.0	4.4	
	85	-	12.1	9.0	4.4	
	92	-	-	8.8	4.4	
	98	-	-	8.8	4.4	
	105	-	-	8.8	4.4	
	111	-	-	-	4.4	
	118	-	-	-	4.4	
	125	-	-	-	4.4	
131	-	-	-	-		
164 ft	39	-	11.0	8.0	-	
	46	-	10.8	7.2	-	
	52	-	10.3	7.0	2.2	
	59	-	10.1	6.8	1.8	
	66	-	-	-	-	
	72	-	9.9	6.3	1.5	
	79	-	9.7	6.1	1.3	
	85	-	9.4	6.1	1.3	
	92	-	-	5.9	1.3	
	98	-	-	5.9	1.3	
	105	-	-	-	5.7	
	111	-	-	-	1.3	
	118	-	-	-	-	
	125	-	-	-	-	
131	-	-	-	-		

## on Fixed Fly Jib

60,000 lb counterweight

85%

Boom	Radius	Fixed Fly Jib							
		39 ft		59 ft		79 ft		98 ft	
	ft	3°	20°	3°	20°	3°	20°	3°	20°
		lb	lb	lb	lb	lb	lb	lb	lb
164 ft	33	24.0	-	-	-	-	-	-	-
	39	23.1	-	17.0	-	-	-	-	-
	46	21.8	-	16.3	-	13.8	-	-	-
	52	20.2	17.0	15.6	-	13.2	-	9.9	-
	59	18.9	16.0	14.9	13.0	12.1	-	9.7	-
	66	17.8	15.2	14.1	11.9	11.4	-	9.0	-
	72	16.9	14.1	13.4	11.4	10.5	9.0	8.5	-
	79	15.6	13.4	12.5	11.0	10.1	8.3	8.1	-
	85	14.3	12.5	11.9	10.3	9.7	8.1	7.7	6.0
	92	13.4	11.9	11.2	9.9	9.0	7.7	7.0	5.9
	98	12.1	11.2	10.3	9.7	8.3	7.2	6.6	5.7
	111	10.1	9.7	8.8	8.8	6.8	6.3	5.7	5.2
	125	8.3	8.1	7.7	7.7	5.2	5.9	4.6	4.4
	138	5.7	6.3	6.3	6.6	4.4	5.5	3.3	3.9
150	3.7	4.1	4.4	5.5	3.3	4.6	2.8	3.5	
164	1.9	2.4	2.6	3.5	2.4	3.7	1.9	2.8	
170	-	1.5	1.9	2.6	1.9	3.0	-	2.4	
177	-	-	-	1.7	-	2.4	-	-	

24,000 lb counterweight

85%

Boom	Radius	Fixed Fly Jib							
		39 ft		59 ft		79 ft		98 ft	
	ft	3°	20°	3°	20°	3°	20°	3°	20°
		lb	lb	lb	lb	lb	lb	lb	lb
164 ft	33	24.0	-	-	-	-	-	-	-
	39	23.1	-	17.0	-	-	-	-	-
	46	21.8	-	16.3	-	13.8	-	-	-
	52	20.2	17.0	15.6	-	13.2	-	9.9	-
	59	18.9	16.0	14.7	13.0	12.1	-	9.7	-
	66	17.8	15.2	14.1	11.9	11.4	-	9.0	-
	72	16.9	14.1	13.4	11.4	10.5	9.0	8.5	-
	79	14.1	13.4	12.5	11.0	10.1	8.3	8.1	-
	85	11.4	12.5	11.9	10.3	9.7	8.1	7.7	6.0
	92	9.0	11.0	9.7	9.9	9.0	7.7	7.0	5.9
	98	6.8	8.5	7.0	9.7	7.7	7.2	6.6	5.7
	111	3.3	4.6	3.9	5.9	4.4	6.3	4.4	5.2
	125	-	1.9	1.5	3.3	1.9	4.1	2.2	4.4
	131	-	-	-	2.2	-	3.0	-	3.7
137	-	-	-	-	-	1.9	-	2.6	
144	-	-	-	-	-	-	-	1.7	

### Lifting Capacity Notes

Lifting capacities do not exceed 85% of tipping load resp. 75% of tipping load on luffing fly jib.

Max. wind speed: 50.85 ft/sec or 35 mph.

Crane operation up to a wind force of 5% Beaufort scale (29.5 ft/sec or 20 mph) permissible.

The weights of all load-handling devices are considered part of the load, and suitable allowance for them should be made.

All capacities above the parting line are based on structural strength. The capacities below the parting line are based on stability for the percentage of tipping load indicated.

# Lifting Capacities in 1,000 lb

with outriggers – 360°

## 88,000 lb Counterweight

85%

Radius ft	Main Boom					
	42 ft	72 ft	103 ft	133 ft	149 ft	164 ft
9	331.0**	-	-	-	-	-
11	299.8**	-	-	-	-	-
13	275.5	198.0*	132.0	-	-	-
15	255.7	198.0*	132.0	-	-	-
16	233.7	198.0*	129.1	-	-	-
20	199.2	193.5*	119.0	79.0	-	-
23	168.4	167.3*	109.3	72.7	62.0	-
26	144.1	142.8*	99.8	67.6	58.8	49.0
29	125.6	124.3*	92.3	62.8	54.8	46.9
33	-	109.5	85.0	58.4	51.1	44.0
39	-	87.0	73.6	50.9	44.5	39.6
46	-	72.7	67.0	44.7	39.6	35.4
52	-	61.0	57.3	39.9	35.2	31.5
59	-	51.3	50.7	35.9	31.9	27.9
66	-	-	45.1	33.0	28.8	24.4
72	-	-	39.0	29.9	26.2	22.0
79	-	-	33.7	27.3	23.8	19.8
85	-	-	29.7	24.2	22.0	18.2
92	-	-	-	22.0	20.2	16.7
98	-	-	-	19.4	18.9	15.4
105	-	-	-	17.6	17.6	14.3
111	-	-	-	16.5	16.3	13.2
118	-	-	-	-	15.2	12.3
125	-	-	-	-	14.1	11.0
131	-	-	-	-	12.7	9.9
138	-	-	-	-	-	8.8
144	-	-	-	-	-	7.4
150	-	-	-	-	-	-
157	-	-	-	-	-	-
164	-	-	-	-	-	-
170	-	-	-	-	-	-
177	-	-	-	-	-	-
184	-	-	-	-	-	-

Radius ft	Main Boom 164 ft		Radius ft
	33 ft	56 ft	
9	-	-	9
11	-	-	11
13	-	-	13
15	-	-	15
16	-	-	16
20	-	-	20
23	-	-	23
26	-	-	26
29	-	-	29
33	-	-	33
39	25.0	-	39
46	23.8	18.0	46
52	22.2	18.0	52
59	20.7	17.1	59
66	18.9	16.0	66
72	16.9	15.2	72
79	15.4	14.1	79
85	13.8	12.7	85
92	12.5	11.9	92
98	11.4	10.8	98
105	10.3	10.1	105
111	9.7	9.4	111
118	8.3	8.3	118
125	7.9	7.7	125
131	7.4	7.2	131
138	6.8	6.6	138
144	6.1	6.1	144
150	5.5	5.5	150
157	4.8	5.0	157
164	4.1	4.6	164
170	-	4.1	170
177	-	3.7	177
184	-	3.3	184

## 60,000 lb Counterweight

85%

Radius ft	Main Boom							
	42 ft	*** 42 ft	72 ft	*** 72 ft	103 ft	133 ft	149 ft	164 ft
9	331.0**	-	-	-	-	-	-	-
11	299.8**	-	198.0*	-	-	-	-	-
13	275.5	-	198.0*	-	132.0	-	-	-
15	242.5	44.0	198.0*	43.0	132.0	-	-	-
16	219.7	40.0	198.0*	39.0	129.1	-	-	-
20	178.7	33.0	177.9*	32.1	119.0	79.0	-	-
23	149.2	27.7	148.1*	26.9	109.3	72.7	62.0	-
26	127.4	23.5	126.3*	22.7	99.8	67.6	58.8	49.0
29	110.8	20.2	109.5	19.4	92.3	62.8	54.8	46.9
33	-	-	96.3	16.5	85.0	58.4	51.1	44.0
39	-	-	74.2	11.9	73.6	50.9	44.5	39.6
46	-	-	58.2	8.6	60.1	44.7	39.6	35.4
52	-	-	46.7	6.1	48.7	39.9	35.2	31.5
59	-	-	38.3	4.2	40.1	35.9	31.9	27.9
66	-	-	-	-	33.7	33.0	28.8	24.4
72	-	-	-	-	28.6	27.9	26.2	22.0
79	-	-	-	-	24.4	23.5	23.8	19.8
85	-	-	-	-	20.9	19.8	21.3	18.2
92	-	-	-	-	-	16.9	18.2	16.7
98	-	-	-	-	-	14.1	15.6	15.4
105	-	-	-	-	-	11.9	13.4	13.2
111	-	-	-	-	-	-	10.1	11.2
118	-	-	-	-	-	-	9.9	11.2
125	-	-	-	-	-	-	8.3	7.9
131	-	-	-	-	-	-	7.0	6.6
138	-	-	-	-	-	-	-	5.2
144	-	-	-	-	-	-	-	4.4
150	-	-	-	-	-	-	-	-
157	-	-	-	-	-	-	-	-
164	-	-	-	-	-	-	-	-
170	-	-	-	-	-	-	-	-
177	-	-	-	-	-	-	-	-
184	-	-	-	-	-	-	-	-

Radius ft	Main Boom 164 ft		Radius ft
	33 ft	56 ft	
9	-	-	9
11	-	-	11
13	-	-	13
15	-	-	15
16	-	-	16
20	-	-	20
23	-	-	23
26	-	-	26
29	-	-	29
33	-	-	33
39	25.0	-	39
46	23.8	18.0	46
52	22.2	18.0	52
59	20.7	17.1	59
66	18.9	16.0	66
72	16.9	15.2	72
79	15.4	14.1	79
85	13.8	12.7	85
92	12.5	11.9	92
98	11.4	10.8	98
105	10.3	10.1	105
111	9.7	9.4	111
118	8.3	8.3	118
125	7.9	7.7	125
131	6.6	7.2	131
138	5.5	6.6	138
144	4.4	6.1	144
150	3.5	5.0	150
157	2.6	4.1	157
164	-	3.3	164
170	-	2.6	170
177	-	-	177
184	-	-	184

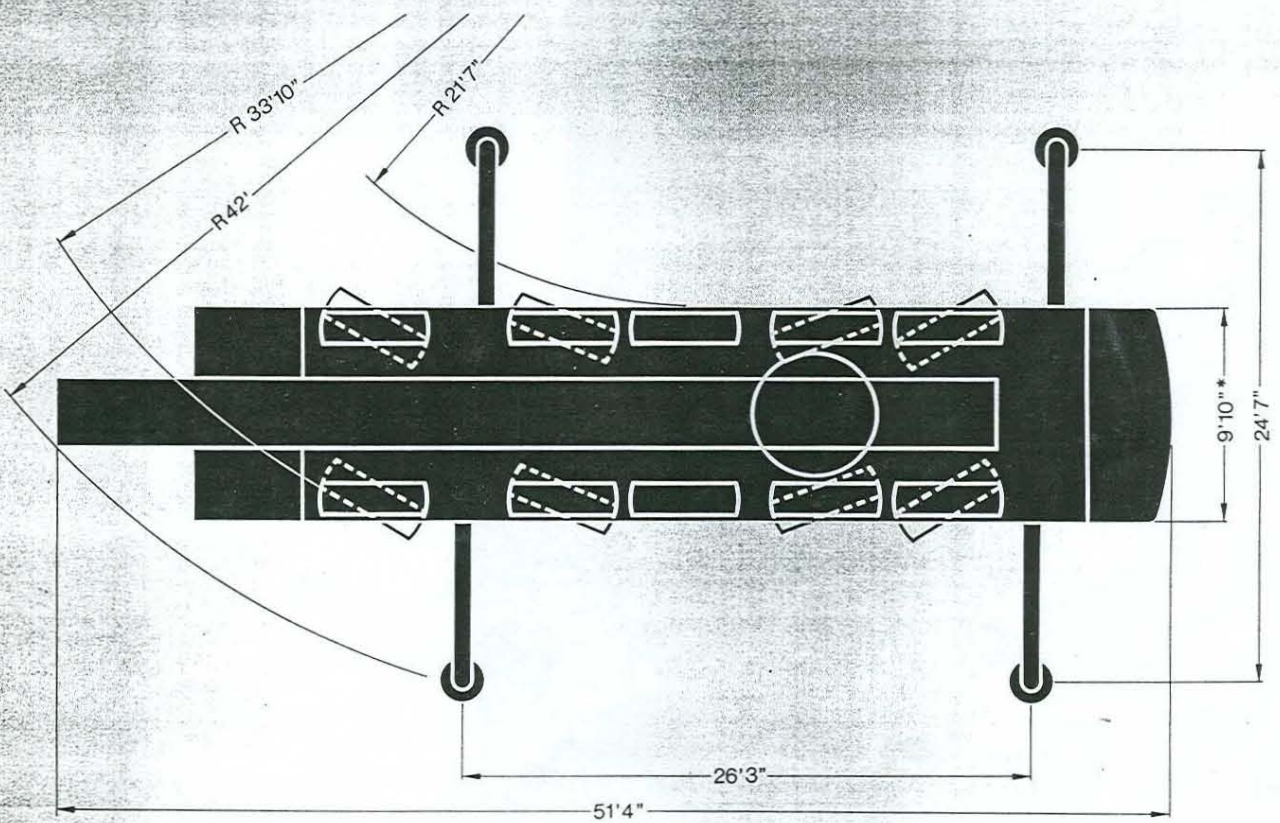
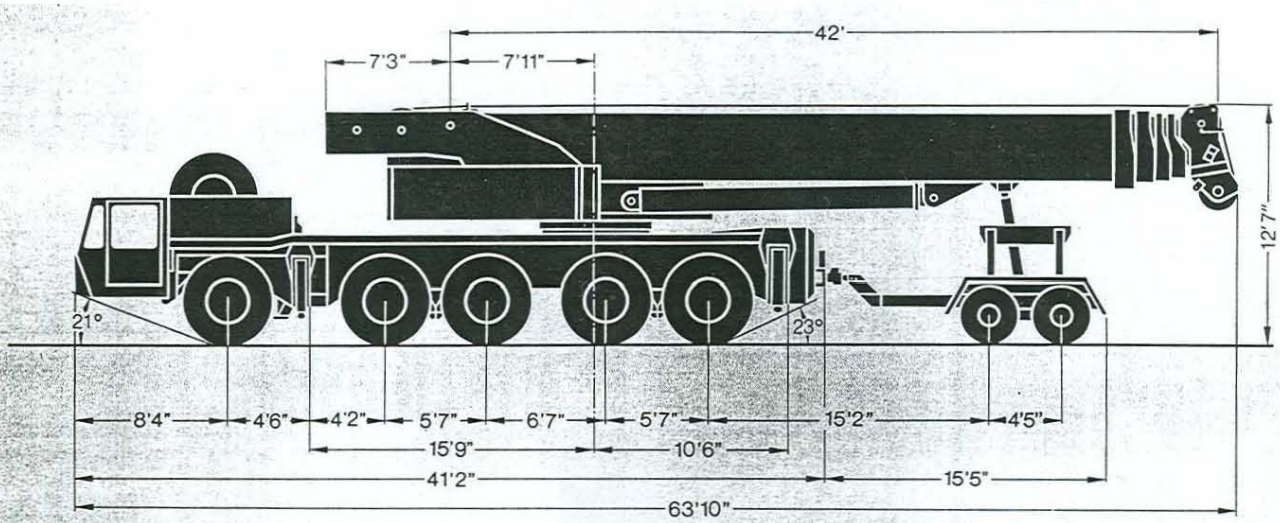
\* 85% lift capacity

\*\* with heavy lift accessories

\*\*\* over load on boom



# Dimension Chart



\* Width with more than 60,000 lb counterweight 14'5" tail swing 16'11"