

# Grove GMK6300L

## North American Product Guide

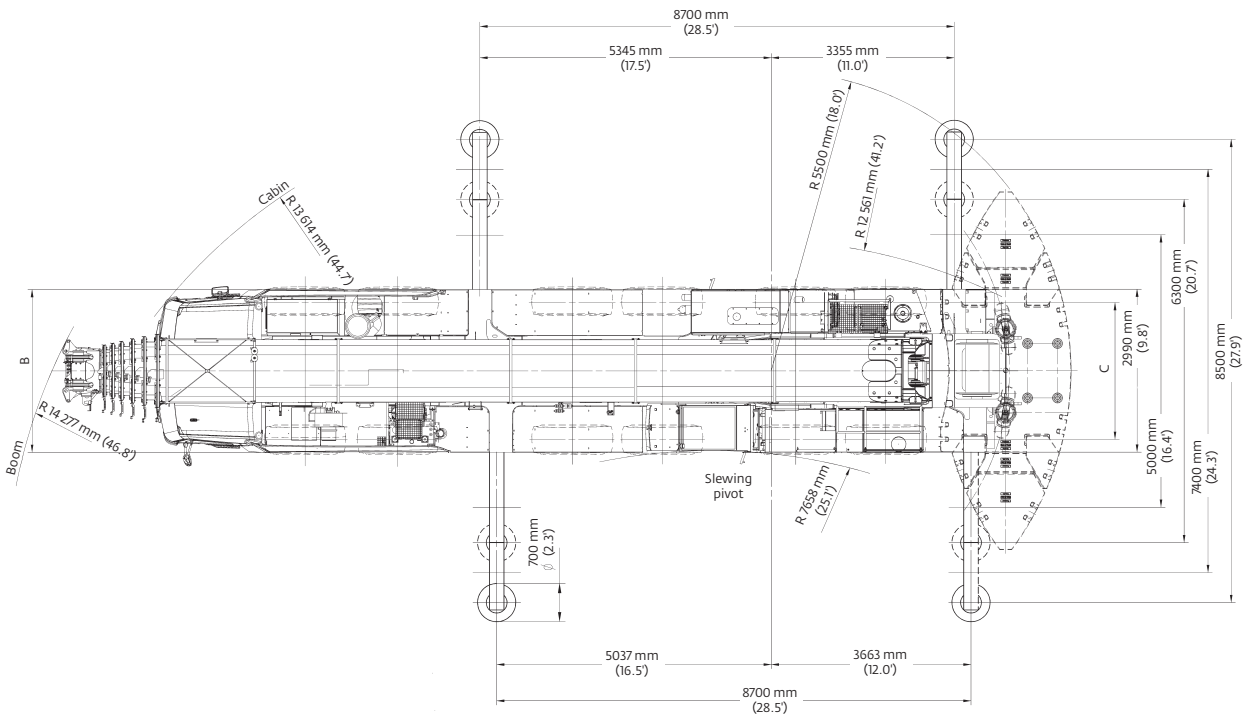
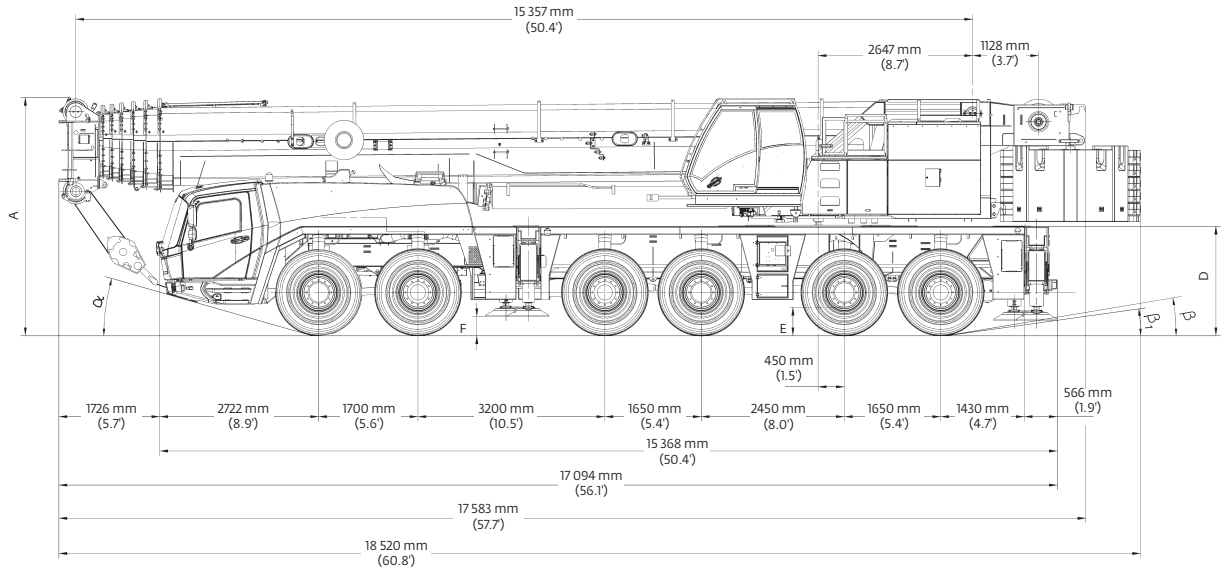
ASME B30.5  
Imperial 85%

### Features

- (300 t) 350 USt capacity
- 15,6 m - 80 m (51 ft - 263 ft) seven-section full power MEGAFORM™ boom with TWIN-LOCK™ pinning
- 12 m - 21 m (39 ft - 69 ft) hydraulic offset bi-fold swingaway
- 2 x 8 m (26 ft) intermediate lattice inserts
- 92,5 t (203,900 lb) counterweight with hydraulic removal system
- MEGATRAK™ independent hydro-pneumatic suspension
- Allison 4500 SP transmission



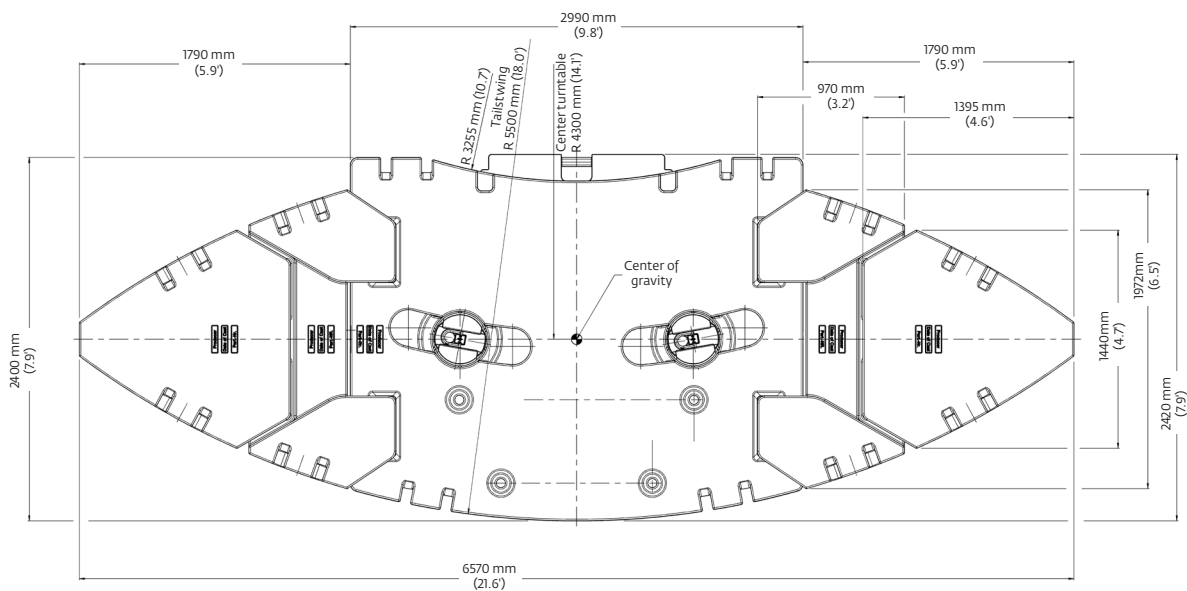
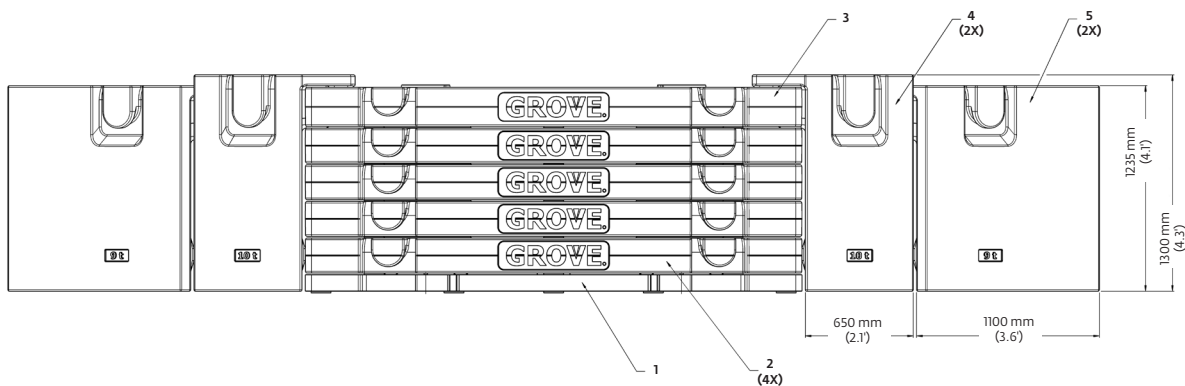
# Dimensions



Tires	A	A <sup>130 mm</sup> (12.4)	B	C	D	E	F	α	β	β <sub>1</sub>
14.00 R25	3950 mm (13.0')	3820 mm (12.5')	2970 mm (9.7')	2570 mm (8.4')	1822 mm (6.0')	400 mm (1.3')	297 mm (1.0')	14°	8°	6°
16.00 R25	4000 mm (13.1')	3870 mm (12.7')	2975 mm (9.8')	2510 mm (8.2')	1872 mm (6.1')	450 mm (1.5')	327 mm (1.1')	16°	10°	8°
20.5 R25	4000 mm (13.1')	3870 mm (12.7')	3070 mm (10.1')	2530 mm (8.3')	1872 mm (6.1')	450 mm (1.5')	327 mm (1.1')	16°	10°	8°

Ra = Radius all wheels steered  
 \*Lowered

# Counterweight

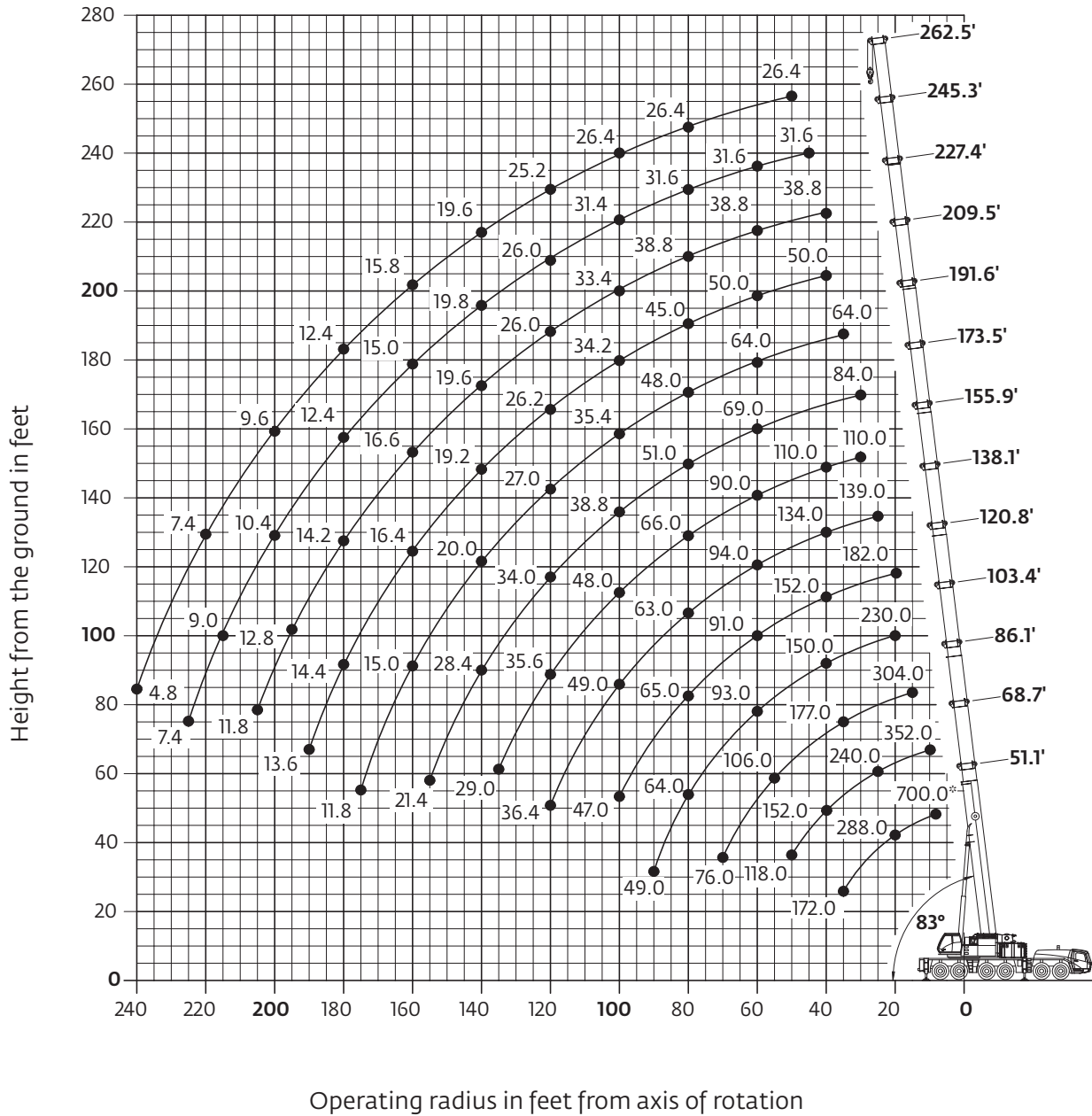


	<b>1</b> 7,0 t (15,430 lb)	<b>2</b> 9,5 t (20,940 lb)	<b>3</b> 9,5 t (20,940 lb)	<b>4</b> 10,0 t (22,050 lb)	<b>5</b> 9,0 t (19,840 lb)
<b>7,0 t (15,400 lb)</b>	X	-	-	-	-
<b>16,5 t (36,300 lb)</b>	X	X	-	-	-
<b>26,0 t (57,300 lb)</b>	X	2 X	-	-	-
<b>35,5 t (78,200 lb)</b>	X	3 X	-	-	-
<b>45,0 t (99,200 lb)</b>	X	4 X	-	-	-
<b>54,5 t (120,100 lb)</b>	X	4 X	X	-	-
<b>74,5 t (164,200 lb)</b>	X	4 X	X	2 X	-
<b>92,5 t (203,900 lb)</b>	X	4 X	X	2 X	2 X


# Working range

## Main boom

51 ft - 263 ft main boom



*Hook heights shown in the working diagram do not consider loaded boom deflection.*

	Hook block	H
		200 ton, 9 sheave
	160 ton, 7 sheave	12.0 ft (3650 mm)
	125 ton, 5 sheave	10.8 ft (3300 mm)
	80 ton, 3 sheave	10.8 ft (3300 mm)
	32 ton, 1 sheave	10.5 ft (3200 mm)
	12 ton, single line headache ball	8.0 ft (2450 mm)

# Load charts

## Main boom






15,6 m - 80 m  
 (51.1 ft - 262.5 ft)

92 500 kg  
 (203,900 lb)

27 ft 9 in spread  
 (100%)

360°

Feet	51.1	68.7	86.1	103.4	120.8	138.1	155.9	173.5	191.6	209.5	227.4	245.3	262.5
8.0	700.0*												
10.0	418.0	352.0											
15.0	348.0	324.0	304.0										
20.0	288.0	276.0	260.0	230.0	182.0								
25.0	244.0	240.0	230.0	217.0	178.0	139.0							
30.0	207.0	207.0	202.0	192.0	178.0	139.0	110.0	84.0					
35.0	172.0	178.0	177.0	171.0	167.0	139.0	110.0	84.0	64.0				
40.0		152.0	152.0	150.0	152.0	134.0	110.0	84.0	64.0	50.0	38.8		
45.0		134.0	132.0	130.0	132.0	124.0	106.0	84.0	64.0	50.0	38.8	31.6	
50.0		118.0	118.0	116.0	116.0	115.0	101.0	81.0	64.0	50.0	38.8	31.6	26.4
55.0			106.0	105.0	103.0	105.0	95.0	75.0	64.0	50.0	38.8	31.6	26.4
60.0			94.0	93.0	91.0	94.0	90.0	69.0	64.0	50.0	38.8	31.6	26.4
65.0			85.0	84.0	82.0	84.0	84.0	64.0	59.0	50.0	38.8	31.6	26.4
70.0			76.0	76.0	76.0	76.0	79.0	59.0	55.0	50.0	38.8	31.6	26.4
75.0				69.0	71.0	69.0	72.0	55.0	52.0	48.0	38.8	31.6	26.4
80.0				64.0	65.0	63.0	66.0	51.0	48.0	45.0	38.8	31.6	26.4
85.0				61.0	60.0	58.0	60.0	47.0	44.0	42.4	38.8	31.6	26.4
90.0				49.0	55.0	55.0	56.0	43.2	40.6	39.4	37.2	31.6	26.4
95.0					51.0	52.0	51.0	40.4	37.8	36.6	35.4	31.6	26.4
100.0					47.0	49.0	48.0	38.8	35.4	34.2	33.4	31.4	26.4
105.0						46.0	44.0	37.4	32.8	31.8	31.6	30.0	26.4
110.0						43.0	41.0	36.2	30.8	30.0	29.6	28.8	26.4
115.0						40.2	38.2	35.0	28.8	28.0	27.8	27.4	26.4
120.0							36.4	35.6	34.0	27.0	26.2	26.0	25.2
125.0								33.0	33.0	25.4	24.6	24.6	24.2
130.0								30.6	32.0	23.8	23.0	23.0	22.6
135.0								29.0	30.6	22.0	21.2	21.2	20.8
140.0									28.4	20.0	19.2	19.6	19.6
145.0									26.6	18.2	18.2	18.8	18.0
150.0									24.8	17.2	17.6	18.0	17.0
155.0									21.4	16.0	17.0	17.2	16.0
160.0										15.0	16.4	16.6	15.0
165.0										14.0	15.8	16.0	14.4
170.0										13.2	15.4	15.4	13.8
175.0										11.8	14.8	14.8	13.0
180.0											14.4	14.2	12.4
185.0											14.0	13.8	12.0
190.0											13.6	13.2	11.4
195.0												12.8	10.8
200.0												12.2	10.4
205.0												11.8	9.8
210.0													9.4
215.0													9.0
220.0													8.6
225.0													7.4
230.0													6.4
235.0													5.6
240.0													4.8

\* Over the rear with special equipment


Loads greater than 376,000 lb can only be lifted with special equipment.

THIS CHART IS ONLY A GUIDE AND SHOULD NOT BE USED TO OPERATE THE CRANE.


# Load charts

## Main boom


 15,6 m - 80 m  
 (51.1 ft - 262.5 ft)


 74 500 kg  
 (164,200 lb)


 27 ft 9 in spread  
 (100%)




 360°



		Pounds x 1000											
Feet	51.1	68.7	86.1	103.4	120.8	138.1	155.9	173.5	191.6	209.5	227.4	245.3	262.5
10.0	418.0	352.0											
15.0	348.0	324.0	304.0										
20.0	286.0	276.0	260.0	230.0	182.0								
25.0	240.0	240.0	230.0	217.0	178.0	139.0							
30.0	195.0	196.0	196.0	192.0	178.0	139.0	110.0	84.0					
35.0	163.0	165.0	164.0	162.0	165.0	139.0	110.0	84.0	64.0				
40.0		142.0	141.0	140.0	140.0	134.0	110.0	84.0	64.0	50.0	38.8		
45.0		122.0	123.0	122.0	120.0	121.0	106.0	84.0	64.0	50.0	38.8	31.6	
50.0		107.0	108.0	107.0	105.0	105.0	101.0	81.0	64.0	50.0	38.8	31.6	26.4
55.0		95.0	94.0	96.0	93.0	93.0	94.0	75.0	64.0	50.0	38.8	31.6	26.4
60.0			85.0	84.0	86.0	83.0	84.0	69.0	64.0	50.0	38.8	31.6	26.4
65.0			76.0	78.0	78.0	74.0	75.0	64.0	59.0	50.0	38.8	31.6	26.4
70.0			69.0	71.0	70.0	69.0	68.0	59.0	55.0	50.0	38.8	31.6	26.4
75.0				65.0	64.0	65.0	62.0	55.0	52.0	48.0	38.8	31.6	26.4
80.0				59.0	58.0	60.0	56.0	51.0	48.0	45.0	38.8	31.6	26.4
85.0				54.0	52.0	55.0	52.0	47.0	44.0	42.4	38.8	31.6	26.4
90.0				49.0	49.0	50.0	47.0	43.2	40.6	39.4	37.2	31.6	26.4
95.0					47.0	46.0	43.4	40.4	37.8	36.6	35.4	31.6	26.4
100.0					43.6	42.0	39.6	38.8	35.0	34.2	33.4	31.4	26.4
105.0						38.4	36.0	37.4	32.2	31.6	31.6	30.0	26.4
110.0						35.4	33.6	35.2	29.4	29.0	29.4	28.8	26.4
115.0						32.6	32.6	32.4	27.0	26.6	27.0	27.4	26.4
120.0						30.0	31.4	29.8	24.8	24.4	25.0	25.6	25.2
125.0							30.0	27.4	22.6	22.6	23.8	23.6	24.2
130.0							27.8	25.4	20.4	21.4	22.2	21.8	22.6
135.0								25.8	23.4	18.4	20.0	20.8	20.8
140.0									21.6	17.4	19.0	19.6	19.6
145.0									20.0	16.8	18.2	18.8	18.2
150.0									18.4	16.0	17.6	18.0	16.8
155.0									17.0	15.4	17.0	17.2	15.8
160.0										15.0	16.4	16.6	15.0
165.0										14.4	15.8	16.0	14.4
170.0										14.0	14.8	14.8	13.8
175.0										13.4	13.8	13.6	12.8
180.0											12.8	12.6	11.8
185.0											12.4	11.6	10.8
190.0											11.8	10.8	9.8
195.0												9.8	9.0
200.0												9.0	8.0
205.0												8.6	7.2
210.0													6.6
215.0													5.8
220.0													5.0
225.0													4.4

Loads greater than 376,000 lb can only be lifted with special equipment.

# Load charts

## Main boom

													
 <b>Pounds x 1000</b>													
Feet	51.1	68.7	86.1	103.4	120.8	138.1	155.9	173.5	191.6	209.5	227.4	245.3	262.5
10.0	418.0	352.0											
15.0	344.0	324.0	304.0										
20.0	278.0	276.0	260.0	230.0	182.0								
25.0	219.0	220.0	220.0	217.0	178.0	139.0							
30.0	177.0	180.0	177.0	175.0	164.0	139.0	110.0	84.0					
35.0	145.0	149.0	150.0	145.0	140.0	131.0	110.0	84.0	64.0				
40.0		126.0	126.0	121.0	119.0	111.0	110.0	84.0	64.0	50.0	38.8		
45.0		108.0	109.0	108.0	102.0	96.0	95.0	84.0	64.0	50.0	38.8	31.6	
50.0		95.0	94.0	94.0	88.0	89.0	83.0	77.0	64.0	50.0	38.8	31.6	26.4
55.0			81.0	82.0	77.0	78.0	73.0	68.0	64.0	50.0	38.8	31.6	26.4
60.0			73.0	73.0	71.0	69.0	65.0	60.0	57.0	50.0	38.8	31.6	26.4
65.0			64.0	64.0	66.0	62.0	58.0	53.0	51.0	50.0	38.8	31.6	26.4
70.0			57.0	57.0	60.0	56.0	52.0	51.0	46.0	44.0	38.8	31.6	26.4
75.0				51.0	54.0	51.0	46.0	48.0	40.8	39.8	38.4	31.6	26.4
80.0				48.0	48.0	46.0	42.6	43.2	36.6	35.8	36.0	31.6	26.4
85.0				43.8	43.4	41.6	40.8	39.4	32.8	32.8	33.4	31.6	26.4
90.0				39.8	39.2	37.4	39.0	36.0	29.6	31.0	32.0	31.6	26.4
95.0					35.4	34.4	36.2	32.8	27.8	29.6	30.6	30.6	26.4
100.0					32.2	33.2	33.0	30.0	26.4	28.2	29.2	28.0	25.4
105.0						31.8	30.0	27.4	25.0	27.0	27.4	25.8	23.2
110.0						29.2	27.4	24.8	24.0	25.8	25.2	23.6	21.2
115.0						26.8	25.0	22.4	22.8	24.2	23.8	21.6	19.2
120.0						24.6	22.8	20.2	21.4	23.0	22.0	20.0	17.6
125.0							20.8	18.2	19.6	22.0	19.8	18.2	16.0
130.0							19.0	16.4	18.8	20.4	18.8	16.8	14.4
135.0								17.4	14.8	18.2	17.2	15.4	13.0
140.0									13.2	17.4	17.2	15.6	11.8
145.0									11.8	16.0	15.8	14.2	10.6
150.0									10.6	14.8	14.4	13.0	9.4
155.0										9.4	14.0	11.6	8.4
160.0											12.8	10.6	7.2
165.0											11.8	9.4	6.2
170.0											10.8	10.0	5.2
175.0											9.8	9.0	4.2
180.0												8.0	6.6
185.0													5.2
190.0													4.4
195.0													3.6
200.0													2.8
205.0													3.0
210.0													3.0

													
 <b>Pounds x 1000</b>													
Feet	51.1	68.7	86.1	103.4	120.8	138.1	155.9	173.5	191.6	209.5	227.4	245.3	262.5
10.0	418.0	352.0											
15.0	340.0	324.0	304.0										
20.0	268.0	266.0	260.0	230.0	182.0								
25.0	209.0	210.0	210.0	193.0	178.0	139.0							
30.0	166.0	170.0	169.0	157.0	152.0	139.0	110.0	84.0					
35.0	137.0	140.0	136.0	132.0	125.0	116.0	110.0	84.0	64.0				
40.0		119.0	113.0	111.0	105.0	102.0	97.0	84.0	64.0	50.0	38.8		
45.0		99.0	96.0	95.0	90.0	89.0	83.0	77.0	64.0	50.0	38.8	31.6	
50.0		83.0	86.0	82.0	83.0	78.0	72.0	67.0	64.0	50.0	38.8	31.6	26.4
55.0			73.0	72.0	73.0	68.0	63.0	59.0	56.0	50.0	38.8	31.6	26.4
60.0			63.0	63.0	64.0	60.0	56.0	56.0	49.0	48.0	38.8	31.6	26.4
65.0			56.0	58.0	58.0	54.0	50.0	50.0	43.2	42.0	38.8	31.6	26.4
70.0			51.0	52.0	51.0	48.0	48.0	45.0	38.2	38.4	38.0	31.6	26.4
75.0				46.0	46.0	43.4	45.0	40.6	34.6	36.4	36.6	31.6	26.4
80.0				41.2	40.6	39.2	40.6	36.8	32.6	34.4	34.8	31.6	26.4
85.0				36.8	36.2	37.6	37.0	33.2	30.8	32.8	33.0	30.6	26.4
90.0				33.0	32.6	35.2	33.4	30.0	29.2	30.6	30.2	27.8	25.2
95.0					31.2	31.8	30.0	27.2	27.8	29.2	27.6	25.4	22.8
100.0					29.8	28.8	27.0	24.4	26.4	27.4	25.2	23.0	20.6
105.0						26.2	24.4	21.8	25.0	25.2	23.0	21.0	18.4
110.0						23.8	22.0	19.4	23.8	23.2	21.2	19.0	16.6
115.0						21.8	20.0	17.2	21.6	21.4	19.4	17.4	15.0
120.0						19.8	18.0	15.4	19.8	19.4	17.6	15.8	13.4
125.0							16.2	13.6	18.4	17.6	16.2	14.2	11.8
130.0							15.2	12.0	16.8	16.0	14.6	12.8	10.6
135.0								14.4	10.6	15.2	14.4	11.4	9.2
140.0									9.2	13.8	13.2	11.6	8.0
145.0									8.0	12.6	11.8	10.4	7.0
150.0									6.8	11.4	10.6	9.2	5.8
155.0									5.8	10.4	9.6	8.0	4.8
160.0										9.4	8.4	7.0	3.6
165.0										8.4	7.6	6.0	2.8
170.0										7.4	6.6	5.2	3.6
175.0										6.6	5.8	4.4	2.8
180.0											5.0	3.6	
185.0											4.2	2.8	
190.0												3.6	

Lloads greater than 376,000 lb can only be lifted with special equipment.

# Load charts

## Main boom

Feet	Pounds x 1000												
	51.1	68.7	86.1	103.4	120.8	138.1	155.9	173.5	191.6	209.5	227.4	245.3	262.5
10.0	418.0	352.0											
15.0	336.0	324.0	304.0										
20.0	256.0	258.0	256.0	230.0	182.0								
25.0	197.0	199.0	190.0	177.0	169.0	139.0							
30.0	156.0	157.0	148.0	143.0	133.0	122.0	110.0	84.0					
35.0	123.0	128.0	119.0	116.0	109.0	107.0	99.0	84.0	64.0				
40.0		104.0	102.0	97.0	96.0	90.0	83.0	77.0	64.0	50.0	38.8		
45.0		84.0	86.0	82.0	83.0	77.0	71.0	67.0	62.0	50.0	38.8	31.6	
50.0		69.0	72.0	73.0	71.0	67.0	61.0	62.0	54.0	50.0	38.8	31.6	26.4
55.0			64.0	66.0	63.0	58.0	56.0	54.0	47.0	46.0	38.8	31.6	26.4
60.0			55.0	57.0	55.0	51.0	53.0	48.0	41.4	42.8	38.8	31.6	26.4
65.0			48.0	49.0	49.0	47.0	47.0	42.4	38.8	40.4	38.0	31.6	26.4
70.0			42.0	43.2	42.6	44.0	41.8	37.8	36.6	37.6	36.6	31.6	26.4
75.0				38.0	37.4	40.4	37.6	33.6	34.6	35.6	33.4	30.8	26.4
80.0				33.6	35.6	35.8	34.0	30.0	32.6	32.4	30.0	27.4	24.6
85.0				30.0	32.8	32.0	30.2	26.8	30.6	29.4	27.0	24.6	21.8
90.0				28.8	29.4	28.6	26.8	24.0	28.2	26.6	24.4	22.0	19.4
95.0					26.4	26.2	23.8	21.2	25.6	24.2	22.0	19.8	17.2
100.0					23.8	25.0	21.2	18.6	23.4	22.0	19.8	17.6	15.2
105.0						22.8	19.4	16.2	21.2	20.0	17.8	15.8	13.4
110.0						20.6	18.6	14.2	19.0	18.2	16.2	14.0	11.6
115.0						18.8	17.6	12.2	17.2	16.4	14.4	12.4	10.2
120.0						17.0	16.6	10.6	15.4	14.6	13.0	11.0	8.8
125.0							15.2	9.0	13.8	13.0	11.6	9.8	7.4
130.0							13.8	7.6	12.4	11.6	10.2	8.4	6.2
135.0							12.4	6.4	11.0	10.2	8.8	7.2	5.2
140.0								5.2	9.8	9.0	7.6	6.0	4.0
145.0								4.0	8.8	8.0	6.4	5.0	3.0
150.0								3.0	7.6	6.8	5.4	4.0	
155.0									6.6	5.8	4.4	3.0	
160.0									5.8	5.0	3.6		
165.0									5.0	4.2	2.6		
170.0									4.2	3.4			
175.0									3.4				

Feet	Pounds x 1000												
	51.1	68.7	86.1	103.4	120.8	138.1	155.9	173.5	191.6	209.5	227.4	245.3	262.5
10.0	418.0	352.0											
15.0	330.0	324.0	304.0										
20.0	244.0	246.0	222.0	197.0	182.0								
25.0	185.0	179.0	166.0	159.0	146.0	133.0							
30.0	137.0	137.0	130.0	123.0	114.0	112.0	103.0	84.0					
35.0	101.0	109.0	105.0	99.0	99.0	92.0	84.0	77.0	64.0				
40.0		86.0	87.0	87.0	82.0	77.0	70.0	70.0	61.0	50.0	38.8		
45.0		69.0	73.0	74.0	70.0	65.0	64.0	60.0	51.0	49.0	38.8	31.6	
50.0		58.0	63.0	64.0	60.0	56.0	57.0	52.0	48.0	47.0	38.8	31.6	26.4
55.0			53.0	54.0	52.0	52.0	49.0	45.0	45.0	43.6	38.0	31.6	26.4
60.0			45.0	46.0	46.0	47.0	43.2	38.6	41.4	40.6	36.8	31.6	26.4
65.0			38.4	39.8	41.8	41.4	38.0	33.8	37.8	35.8	33.0	30.2	26.4
70.0			33.0	35.0	37.6	36.8	33.6	29.4	33.8	31.8	29.2	26.6	23.6
75.0				32.4	33.0	32.8	29.8	25.8	30.2	28.4	26.0	23.4	20.6
80.0				28.6	29.2	30.6	27.8	22.6	27.0	25.4	23.0	20.6	18.0
85.0				25.2	25.8	27.2	26.2	19.8	24.2	22.8	20.4	18.2	15.6
90.0				22.4	22.8	24.2	24.0	17.4	21.8	20.4	18.2	16.0	13.4
95.0					20.2	21.6	21.4	15.0	19.6	18.2	16.0	14.0	11.4
100.0					18.0	19.2	19.2	12.8	17.6	16.2	14.2	12.2	9.6
105.0						17.2	17.0	10.6	15.6	14.6	12.6	10.4	8.0
110.0						15.4	15.2	9.0	13.8	13.0	11.0	9.0	6.6
115.0						13.8	13.6	7.2	12.2	11.4	9.6	7.6	5.4
120.0						12.2	12.0	5.8	10.6	9.8	8.2	6.4	4.0
125.0							10.6	4.4	9.2	8.4	7.0	5.2	3.0
130.0							9.4	3.2	8.0	7.2	5.8	4.2	
135.0									6.8	6.0	4.6	3.0	
140.0									5.8	5.0	3.6		
145.0									4.8	4.0			
150.0									4.0	3.2			
155.0									3.0				

Loads greater than 376,000 lb can only be lifted with special equipment.



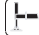

THIS CHART IS ONLY A GUIDE AND SHOULD NOT BE USED TO OPERATE THE CRANE.

The individual crane's load chart, operating instructions and other instructional plates must be read and understood prior to operating the crane







# Load charts

## Main boom





15,6 m - 80 m (51.1 ft - 262.5 ft)    16 500 kg (36,400 lb)    27 ft 9 in spread (100%)    360°

Feet	Pounds x 1000												
	51.1	68.7	86.1	103.4	120.8	138.1	155.9	173.5	191.6	209.5	227.4	245.3	262.5
10.0	418.0	352.0											
15.0	320.0	320.0	292.0										
20.0	228.0	209.0	190.0	182.0	164.0								
25.0	159.0	153.0	144.0	134.0	122.0	119.0							
30.0	109.0	114.0	110.0	105.0	101.0	94.0	85.0	79.0					
35.0	79.0	88.0	87.0	88.0	82.0	76.0	74.0	68.0	58.0				
40.0		68.0	75.0	72.0	68.0	64.0	63.0	56.0	53.0	47.0	38.8		
45.0		55.0	60.0	60.0	56.0	57.0	53.0	47.0	50.0	46.0	38.0	31.6	
50.0		45.0	49.0	51.0	52.0	49.0	45.0	39.8	43.8	41.4	37.4	31.6	26.4
55.0			40.8	42.2	45.0	43.0	39.6	33.8	38.0	35.8	32.8	29.8	26.4
60.0			34.2	38.4	39.0	38.8	36.6	28.8	33.2	31.2	28.4	25.6	22.4
65.0			29.2	32.8	33.4	34.2	32.8	24.6	29.0	27.2	24.6	22.0	19.0
70.0			24.8	28.2	29.4	30.2	29.0	21.0	25.6	23.8	21.4	18.8	16.0
75.0				24.4	25.4	26.2	25.6	18.0	22.4	20.8	18.6	16.0	13.2
80.0				21.0	22.2	23.0	22.8	15.2	19.8	18.2	16.0	13.6	11.0
85.0				18.2	19.2	20.0	20.0	12.8	17.4	16.0	13.6	11.4	8.8
90.0				15.8	16.8	17.6	17.4	10.6	15.2	13.8	11.6	9.4	7.0
95.0					14.6	15.4	15.2	8.6	13.4	12.0	9.8	7.8	5.2
100.0					12.6	13.4	13.2	6.8	11.6	10.4	8.2	6.2	3.8
105.0						11.6	11.6	5.2	10.0	8.8	6.8	4.8	
110.0						10.2	10.0	3.6	8.6	7.4	5.4	3.6	
115.0						8.8	8.6		7.2	6.2	4.2		
120.0						7.4	7.2		5.8	5.0	3.2		
125.0							6.0		4.6	4.0			
130.0							5.0		3.6	2.8			
135.0							4.0		2.6				

15,6 m - 80 m (51.1 ft - 262.5 ft)    7000 kg (15,400 lb)    27 ft 9 in spread (100%)    360°

Feet	Pounds x 1000									
	51.1	68.7	86.1	103.4	120.8	138.1	155.9	173.5	191.6	
10.0	414.0	352.0								
15.0	304.0	288.0	248.0							
20.0	191.0	178.0	165.0	150.0	134.0					
25.0	125.0	124.0	118.0	115.0	106.0	96.0				
30.0	82.0	91.0	92.0	87.0	81.0	77.0	73.0	60.0		
35.0	58.0	68.0	71.0	69.0	66.0	64.0	58.0	58.0	49.0	
40.0		52.0	57.0	55.0	56.0	55.0	47.0	49.0	46.0	
45.0		40.0	45.0	48.0	47.0	46.0	39.0	41.4	38.2	
50.0		31.2	36.2	40.2	39.6	38.8	32.2	34.8	32.0	
55.0			29.6	33.2	33.4	32.8	26.6	29.4	27.0	
60.0			24.2	27.6	28.4	28.0	22.2	25.0	22.8	
65.0			19.6	23.2	24.2	24.0	18.4	21.4	19.2	
70.0			16.0	19.4	20.6	20.6	15.4	18.2	16.4	
75.0				16.2	17.4	17.6	12.6	15.6	13.8	
80.0				13.4	14.6	15.2	10.2	13.4	11.6	
85.0				11.2	12.2	13.0	8.2	11.2	9.6	
90.0				9.2	10.2	11.0	6.4	9.6	7.8	
95.0					8.4	9.2	4.8	8.0	6.4	
100.0					6.8	7.6	3.4	6.6	5.0	
105.0						6.2		5.2	3.8	
110.0						4.8		4.0	2.6	
115.0						3.8		3.0		
120.0						2.8				

15,6 m - 80 m (51.1 ft - 262.5 ft)    0 kg (0 lb)    27 ft 9 in spread (100%)    360°

Feet	Pounds x 1000									
	51.1	68.7	86.1	103.4	120.8	138.1	155.9	173.3	191.6	
10.0	410.0	352.0								
15.0	290.0	252.0	211.0							
20.0	160.0	151.0	140.0	128.0	121.0					
25.0	98.0	103.0	102.0	96.0	87.0	84.0				
30.0	62.0	74.0	74.0	70.0	70.0	67.0	58.0	59.0		
35.0	42.4	53.0	57.0	58.0	56.0	53.0	45.0	47.0	42.8	
40.0		39.0	43.4	46.0	44.0	42.6	35.0	37.4	34.2	
45.0		29.2	34.6	36.4	35.6	34.6	27.8	30.6	27.6	
50.0		21.8	27.2	29.4	29.0	28.4	22.2	25.0	22.6	
55.0			21.4	24.0	23.8	23.6	17.6	20.6	18.4	
60.0			16.8	19.6	19.8	19.6	14.0	17.0	15.0	
65.0			13.0	16.2	16.2	16.2	11.0	14.0	12.0	
70.0			9.8	13.2	13.4	13.4	8.4	11.4	9.6	
75.0				10.4	11.0	11.0	6.2	9.2	7.6	
80.0				8.2	8.8	9.0	4.2	7.4	5.8	
85.0				6.2	7.0	7.2		5.8	4.2	
90.0				4.6	5.4	5.8		4.2	2.8	
95.0					4.0	4.4		3.0		
100.0					2.6	3.2				

Loads greater than 376,000 lb can only be lifted with special equipment.

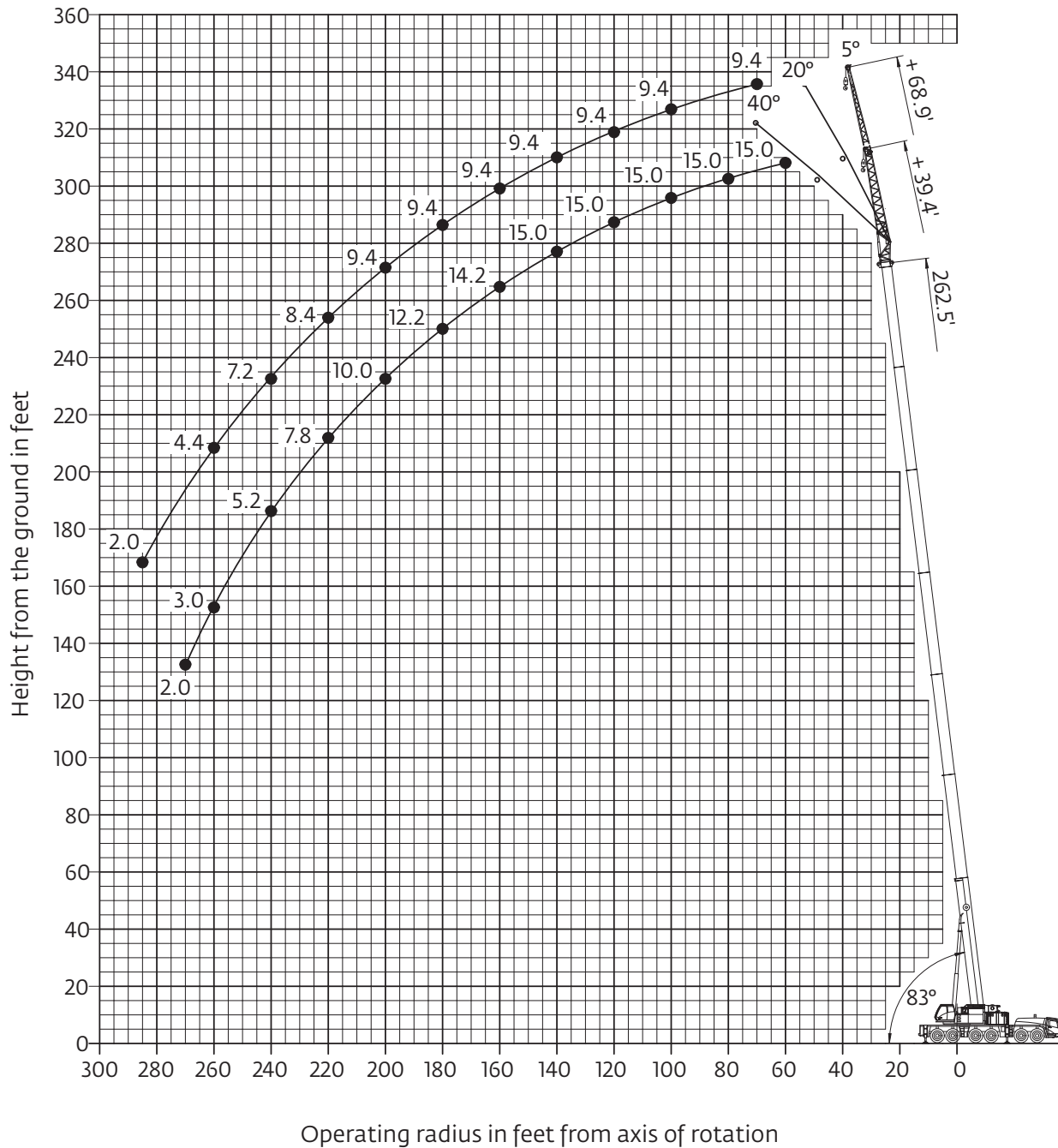
THIS CHART IS ONLY A GUIDE AND SHOULD NOT BE USED TO OPERATE THE CRANE.

The individual crane's load chart, operating instructions and other instructional plates must be read and understood prior to operating the crane

# Working range

## Hydraulic offsettable swingaway

263 ft main boom with 39 ft - 69 ft swingaway



*Hook heights shown in the working diagram do not consider loaded boom deflection.*

# Load charts

## Hydraulic offsettable swingaway

### Intermediate angle and loads for luffing



74.8 m - 80 m  
(245 ft - 263 ft)



12 m - 21 m  
(39 ft - 69 ft)



92 500 kg  
(203,900 lb)



27 ft 9 in spread  
(100%)



360°



Pounds x 1000

Feet	245.3' + 39.4'			262.5' + 39.4'			245.3' + 68.9'			262.5' + 68.9'		
	5°	5°- 20°	20°- 40°	5°	5°- 20°	20°- 40°	5°	5°- 20°	20°- 40°	5°	5°- 20°	20°- 40°
55.0	18.6											
60.0	18.6	18.0		15.0	14.8							
65.0	18.6	18.0		15.0	14.8							
70.0	18.6	18.0		15.0	14.8		11.0			9.4		
75.0	18.6	18.0	18.0	15.0	14.8		11.0			9.4		
80.0	18.6	18.0	17.8	15.0	14.8	14.8	11.0	11.0		9.4	9.4	
85.0	18.6	18.0	17.6	15.0	14.8	14.8	11.0	11.0		9.4	9.4	
90.0	18.6	18.0	17.6	15.0	14.8	14.8	11.0	11.0		9.4	9.4	
95.0	18.6	18.0	17.4	15.0	14.8	14.8	11.0	11.0		9.4	9.4	
100.0	18.6	18.0	17.2	15.0	14.8	14.8	11.0	11.0	9.6	9.4	9.4	
105.0	18.6	18.0	17.2	15.0	14.8	14.8	11.0	11.0	9.4	9.4	9.4	9.4
110.0	18.6	18.0	17.0	15.0	14.8	14.8	11.0	11.0	9.4	9.4	9.4	9.2
115.0	18.6	18.0	17.0	15.0	14.8	14.8	11.0	10.8	9.2	9.4	9.4	9.2
120.0	18.6	18.0	16.8	15.0	14.8	14.8	11.0	10.6	9.2	9.4	9.4	9.2
125.0	18.6	18.0	16.8	15.0	14.8	14.8	11.0	10.6	9.2	9.4	9.4	9.0
130.0	18.6	18.0	16.6	15.0	14.8	14.8	11.0	10.4	9.0	9.4	9.4	9.0
135.0	18.4	18.0	16.6	15.0	14.8	14.8	11.0	10.2	9.0	9.4	9.4	9.0
140.0	17.8	17.6	16.4	15.0	14.8	14.8	11.0	10.2	9.0	9.4	9.4	8.8
145.0	17.0	17.0	16.4	15.0	14.8	14.8	11.0	10.0	8.8	9.4	9.4	8.8
150.0	16.2	16.2	16.2	15.0	14.8	14.6	11.0	9.8	8.8	9.4	9.4	8.8
155.0	15.4	15.4	15.6	14.6	14.6	14.4	11.0	9.8	8.8	9.4	9.4	8.8
160.0	14.6	14.6	15.0	14.2	14.2	14.2	11.0	9.6	8.8	9.4	9.4	8.6
165.0	14.0	14.0	14.4	13.8	13.6	13.6	10.8	9.6	8.6	9.4	9.4	8.6
170.0	13.4	13.4	13.6	13.2	13.2	13.2	10.6	9.4	8.6	9.4	9.4	8.6
175.0	12.6	12.6	13.0	12.4	12.4	12.8	10.4	9.4	8.6	9.4	9.2	8.6
180.0	11.8	11.8	12.4	12.0	12.0	12.2	10.4	9.2	8.6	9.4	9.2	8.6
185.0	11.0	11.0	11.6	11.4	11.4	11.8	10.2	9.2	8.6	9.4	9.2	8.4
190.0	10.4	10.4	11.0	10.8	10.8	11.2	10.0	9.0	8.6	9.4	9.0	8.4
195.0	9.6	9.6	10.2	10.2	10.2	10.6	10.0	9.0	8.4	9.4	9.0	8.4
200.0	9.0	9.0	9.6	9.6	9.6	10.0	9.6	9.0	8.4	9.4	8.8	8.4
205.0	8.6	8.6	8.8	9.0	9.0	9.6	9.4	8.8	8.4	9.2	8.8	8.4
210.0	8.2	8.2	8.4	8.4	8.4	9.0	9.0	8.8	8.4	8.8	8.6	8.4
215.0	7.8	7.8	8.0	8.0	8.0	8.4	8.4	8.4	8.4	8.6	8.6	8.4
220.0	7.4	7.4		7.4	7.4	7.8	7.8	7.8	8.4	8.2	8.2	8.4
225.0	7.0	7.0		6.8	6.8	7.2	7.4	7.4	8.2	7.8	7.8	8.0
230.0	6.6	6.6		6.4	6.4		6.8	6.8	7.6	7.4	7.4	7.8
235.0	6.2	6.2		5.8	5.8		6.4	6.4	7.0	6.8	6.8	7.6
240.0	5.8	5.8		5.2	5.2		6.0	6.0	6.6	6.4	6.4	7.2
245.0	5.6	5.6		4.6	4.6		5.8	5.8		6.0	6.0	6.6
250.0	5.2	5.2		4.0	4.0		5.4	5.4		5.6	5.6	6.2
255.0	4.8	4.8		3.4	3.4		5.2	5.2		5.0	5.0	5.6
260.0	4.4			3.0	3.0		4.8	4.8		4.4	4.4	
265.0				2.4	2.4		4.6	4.6		4.0	4.0	
270.0				2.0	2.0		4.2	4.2		3.4	3.4	
275.0							4.0	4.0		3.0	3.0	
280.0							3.8	3.8		2.4	2.4	
285.0							3.4	3.4		2.0	2.0	

THIS CHART IS ONLY A GUIDE AND SHOULD NOT BE USED TO OPERATE THE CRANE.

# Load chart

## Hydraulic offsettable swingaway

### Intermediate angle and loads for luffing



74,8 m - 80 m  
(245 ft - 263 ft)



12 m - 21 m  
(39 ft - 69 ft)



54 500 kg  
(120,100 lb)



27 ft 9 in spread  
(100%)



360°



Pounds x 1000

Feet	245.3' + 39.4'			262.5' + 39.4'			245.3' + 68.9'			262.5' + 68.9'		
	5°	5°- 20°	20°- 40°	5°	5°- 20°	20°- 40°	5°	5°- 20°	20°- 40°	5°	5°- 20°	20°- 40°
55.0	18.6											
60.0	18.6	18.0		15.0	14.8							
65.0	18.6	18.0		15.0	14.8							
70.0	18.6	18.0		15.0	14.8		11.0			9.4		
75.0	18.6	18.0	18.0	15.0	14.8		11.0			9.4		
80.0	18.6	18.0	17.8	15.0	14.8	14.8	11.0	11.0		9.4	9.4	
85.0	18.6	18.0	17.6	15.0	14.8	14.8	11.0	11.0		9.4	9.4	
90.0	18.6	18.0	17.6	15.0	14.8	14.8	11.0	11.0		9.4	9.4	
95.0	18.6	18.0	17.4	15.0	14.8	14.8	11.0	11.0		9.4	9.4	
100.0	18.6	18.0	17.2	15.0	14.8	14.8	11.0	11.0	9.6	9.4	9.4	
105.0	18.6	18.0	17.2	15.0	14.8	14.8	11.0	11.0	9.4	9.4	9.4	9.4
110.0	18.6	18.0	17.0	15.0	14.8	14.8	11.0	11.0	9.4	9.4	9.4	9.2
115.0	18.0	18.0	17.0	15.0	14.8	14.8	11.0	10.8	9.2	9.4	9.4	9.2
120.0	17.4	17.0	16.8	15.0	14.8	14.8	11.0	10.6	9.2	9.4	9.4	9.2
125.0	17.4	16.6	16.0	15.0	14.8	14.8	11.0	10.6	9.2	9.4	9.4	9.0
130.0	16.2	16.2	15.6	14.0	14.0	14.8	11.0	10.4	9.0	9.4	9.4	9.0
135.0	14.8	14.8	15.2	12.6	12.6	13.6	11.0	10.2	9.0	9.4	9.4	9.0
140.0	13.6	13.6	14.6	11.4	11.4	12.4	11.0	10.2	9.0	9.4	9.4	8.8
145.0	12.4	12.4	13.2	10.2	10.2	11.2	11.0	10.0	8.8	9.4	9.4	8.8
150.0	11.2	11.2	12.2	9.0	9.0	10.0	10.6	9.8	8.8	9.4	9.4	8.8
155.0	10.2	10.2	11.0	8.0	8.0	9.0	10.6	9.6	8.8	9.4	9.4	8.8
160.0	9.2	9.2	10.0	7.0	7.0	8.0	10.6	9.6	8.8	8.8	8.8	8.6
165.0	8.4	8.4	9.0	6.2	6.2	7.0	9.8	9.4	8.6	7.8	7.8	8.6
170.0	7.4	7.4	8.2	5.4	5.4	6.0	9.0	9.0	8.6	7.0	7.0	8.4
175.0	6.4	6.4	7.2	4.6	4.6	5.2	8.2	8.2	8.6	6.2	6.2	7.6
180.0	5.6	5.6	6.2	3.6	3.6	4.4	7.4	7.4	8.6	5.4	5.4	6.8
185.0	4.6	4.6	5.4	2.8	2.8	3.6	6.6	6.6	7.8	4.6	4.6	6.0
190.0	3.8	3.8	4.4	2.0	2.0	2.8	5.8	5.8	7.0	4.0	4.0	5.2
195.0	3.2	3.2	3.6			2.0	5.0	5.0	6.2	3.2	3.2	4.4
200.0	2.4	2.4	3.0				4.2	4.2	5.4	2.6	2.6	3.8
205.0			2.2				3.6	3.6	4.6			3.0
210.0							3.0	3.0	4.0			2.4
215.0							2.4	2.4	3.2			
220.0									2.6			
225.0									2.0			

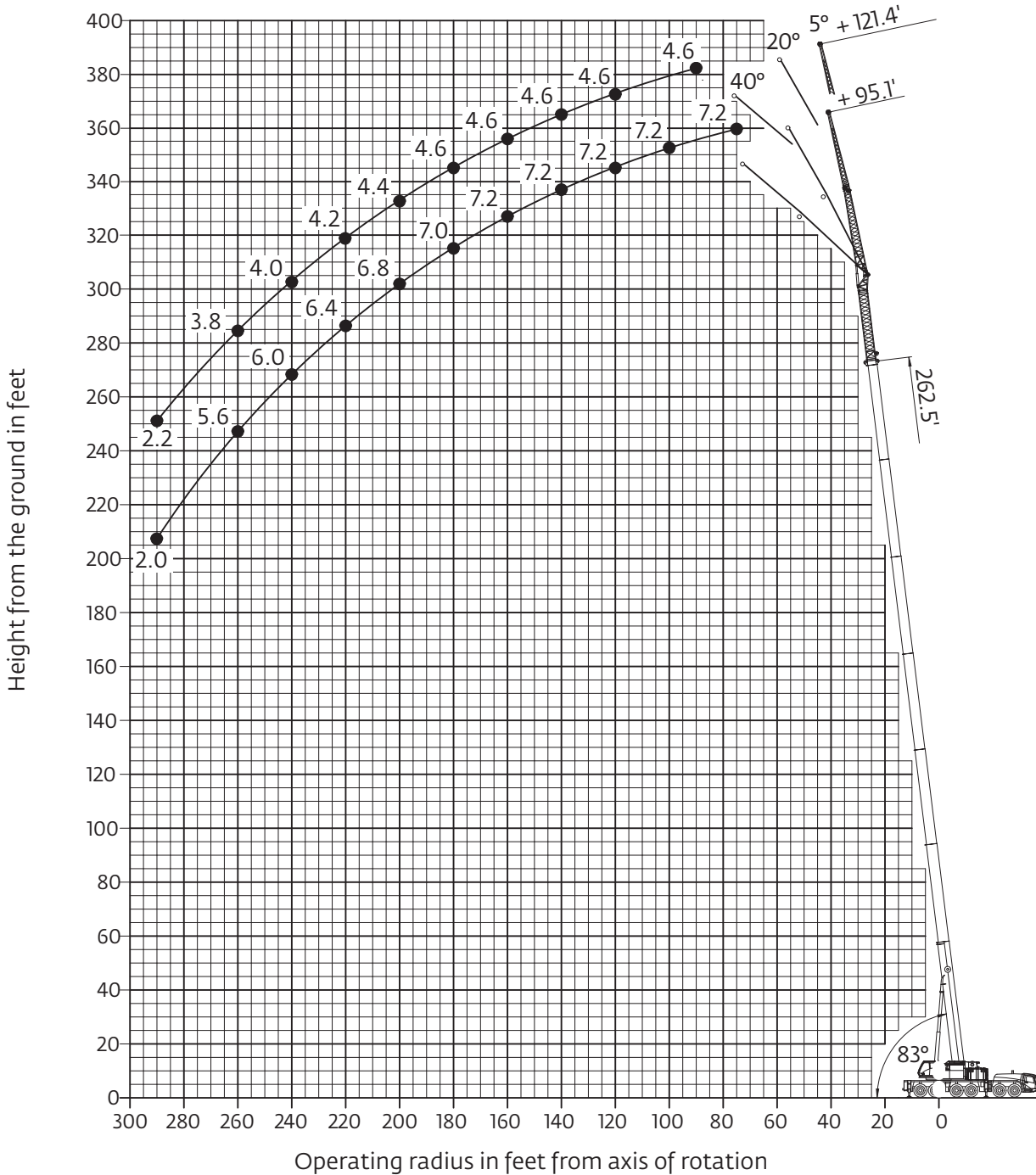
THIS CHART IS ONLY A GUIDE AND SHOULD NOT BE USED TO OPERATE THE CRANE.

The individual crane's load chart, operating instructions and other instructional plates must be read and understood prior to operating the crane.

# Working range

## Hydraulic offsettable swingaway with inserts

263 ft main boom with 39 ft - 69 ft swingaway and 2 X 26 ft inserts



*Hook heights shown in the working diagram do not consider loaded boom deflection.*

# Load chart

## Hydraulic offsettable swingaway with inserts

  
74,8 m - 80 m  
(245 ft - 263 ft)

  
29 m - 37 m  
(95 ft - 121 ft)

  
92 500 kg  
(203,900 lb)

  
27 ft 9 in spread  
(100%)

  
360°



Pounds x 1000






Feet	245.3' + 95.1'			262.5' + 95.1'			245.3' + 121.4'			262.5' + 121.4'		
	5°	5°- 20°	20°- 40°	5°	5°- 20°	20°- 40°	5°	5°- 20°	20°- 40°	5°	5°- 20°	20°- 40°
75.0	8.4			7.2								
80.0	8.4			7.2			5.6					
85.0	8.4			7.2			5.6					
90.0	8.4			7.2			5.6					
95.0	8.4	8.4		7.2	7.2		5.6			4.6		
100.0	8.4	8.4		7.2	7.2		5.6	5.6		4.6	4.6	
105.0	8.4	8.4	7.0	7.2	7.2		5.6	5.6		4.6	4.6	
110.0	8.4	8.2	7.0	7.2	7.2		5.6	5.6		4.6	4.6	
115.0	8.4	8.2	7.0	7.2	7.2	6.2	5.6	5.6	4.4	4.6	4.6	
120.0	8.4	8.0	7.0	7.2	7.2	6.2	5.6	5.6	4.4	4.6	4.6	3.8
125.0	8.4	8.0	7.0	7.2	7.2	6.2	5.6	5.6	4.4	4.6	4.6	3.8
130.0	8.4	7.8	7.0	7.2	7.2	6.2	5.6	5.4	4.4	4.6	4.6	3.8
135.0	8.2	7.8	7.0	7.2	7.2	6.2	5.6	5.4	4.4	4.6	4.6	3.8
140.0	8.2	7.6	7.0	7.2	7.2	6.2	5.6	5.4	4.4	4.6	4.6	3.8
145.0	8.0	7.6	7.0	7.2	7.2	6.2	5.4	5.2	4.4	4.6	4.6	3.8
150.0	8.0	7.6	7.0	7.2	7.0	6.2	5.4	5.2	4.4	4.6	4.6	3.8
155.0	7.8	7.4	7.0	7.2	7.0	6.2	5.4	5.0	4.4	4.6	4.6	3.8
160.0	7.8	7.4	7.0	7.2	7.0	6.2	5.2	5.0	4.4	4.6	4.6	3.8
165.0	7.6	7.2	7.0	7.2	6.8	6.2	5.2	5.0	4.4	4.6	4.6	3.8
170.0	7.6	7.2	6.8	7.2	6.8	6.2	5.0	4.8	4.4	4.6	4.6	3.8
175.0	7.6	7.2	6.8	7.0	6.8	6.2	5.0	4.8	4.4	4.6	4.4	3.8
180.0	7.4	7.0	6.8	7.0	6.6	6.2	5.0	4.8	4.4	4.6	4.4	3.8
185.0	7.4	7.0	6.6	7.0	6.6	6.2	4.8	4.6	4.4	4.6	4.4	3.8
190.0	7.2	6.8	6.6	6.8	6.6	6.2	4.8	4.6	4.4	4.4	4.4	3.8
195.0	7.2	6.8	6.6	6.8	6.6	6.2	4.8	4.6	4.4	4.4	4.2	3.8
200.0	7.0	6.6	6.4	6.8	6.4	6.2	4.6	4.4	4.4	4.4	4.2	3.8
205.0	7.0	6.6	6.4	6.6	6.4	6.2	4.6	4.4	4.4	4.4	4.2	3.8
210.0	6.8	6.4	6.4	6.6	6.4	6.2	4.6	4.4	4.4	4.2	4.2	3.8
215.0	6.8	6.4	6.4	6.6	6.4	6.2	4.4	4.4	4.4	4.2	4.0	3.8
220.0	6.6	6.2	6.2	6.4	6.2	6.2	4.4	4.2	4.4	4.2	4.0	3.8
225.0	6.6	6.2	6.2	6.4	6.2	6.2	4.4	4.2	4.4	4.2	4.0	3.8
230.0	6.4	6.2	6.2	6.4	6.0	6.2	4.2	4.2	4.4	4.0	4.0	3.8
235.0	6.4	6.0	6.2	6.2	6.0	6.0	4.2	4.0	4.2	4.0	4.0	3.8
240.0	6.0	6.0	6.0	6.0	6.0	6.0	4.2	4.0	4.2	4.0	3.8	3.8
245.0	5.6	5.8	6.0	6.0	5.8	6.0	4.0	4.0	4.2	4.0	3.8	3.8
250.0	5.2	5.4	6.0	5.8	5.8	6.0	4.0	4.0	4.0	3.8	3.8	3.8
255.0	4.8	5.2	5.6	5.4	5.4	5.8	4.0	4.0	4.0	3.8	3.8	3.8
260.0	4.6	5.0		4.8	4.8	5.6	4.0	3.8	4.0	3.8	3.8	3.8
265.0	4.4	4.6		4.4	4.4	5.0	3.8	3.8	4.0	3.8	3.6	3.8
270.0	4.0	4.4		3.8	3.8		3.6	3.6	3.8	3.6	3.6	3.8
275.0	3.8	4.0		3.2	3.2		3.4	3.6	3.8	3.6	3.6	3.8
280.0	3.6	3.8		2.8	2.8		3.2	3.6		3.0	3.0	3.6
285.0	3.2	3.6		2.4	2.4		3.0	3.4		2.6	2.6	
290.0	3.0	3.2		2.0	2.0		2.8	3.0		2.2	2.2	
295.0	2.8	3.0					2.6	2.8				
300.0	2.6	2.6					2.2	2.6				
305.0	2.2						2.0	2.4				
310.0	1.8											

THIS CHART IS ONLY A GUIDE AND SHOULD NOT BE USED TO OPERATE THE CRANE.

The individual crane's load chart, operating instructions and other instructional plates must be read and understood prior to operating the crane.

# Load chart

## Hydraulic offsettable swingaway with inserts

 74,8 m - 80 m  
(245 ft - 263 ft)
  29 m - 37 m  
(95 ft - 121 ft)
  54 500 kg  
(120,900 lb)
  27 ft 9 in spread  
(100%)
  360°

Feet	Pounds x 1000											
	5°	245.3' + 95.1'		5°	262.5' + 95.1'		5°	245.3' + 121.4'		5°	262.5' + 121.4'	
		5°- 20°	20°- 40°		5°- 20°	20°- 40°		5°- 20°	20°- 40°		5°- 20°	20°- 40°
75.0	8.4			7.2								
80.0	8.4			7.2			5.6					
85.0	8.4			7.2			5.6					
90.0	8.4			7.2			5.6				4.6	
95.0	8.4	8.4		7.2	7.2		5.6				4.6	
100.0	8.4	8.4		7.2	7.2		5.6	5.6			4.6	4.6
105.0	8.4	8.4	7.0	7.2	7.2		5.6	5.6			4.6	4.6
110.0	8.4	8.2	7.0	7.2	7.2		5.6	5.6			4.6	4.6
115.0	8.4	8.2	7.0	7.2	7.2	6.2	5.6	5.6	4.4		4.6	4.6
120.0	8.4	8.0	7.0	7.2	7.2	6.2	5.6	5.6	4.4		4.6	4.6
125.0	8.4	8.0	7.0	7.2	7.2	6.2	5.6	5.6	4.4		4.6	4.6
130.0	8.4	7.8	7.0	7.2	7.2	6.2	5.6	5.4	4.4		4.6	4.6
135.0	8.2	7.8	7.0	7.2	7.2	6.2	5.6	5.4	4.4		4.6	4.6
140.0	8.2	7.6	7.0	7.2	7.2	6.2	5.6	5.4	4.4		4.6	4.6
145.0	8.0	7.6	7.0	7.2	7.2	6.2	5.4	5.2	4.4		4.6	4.6
150.0	8.0	7.6	7.0	7.2	7.0	6.2	5.4	5.2	4.4		4.6	4.6
155.0	7.8	7.4	7.0	7.2	7.0	6.2	5.4	5.0	4.4		4.6	4.6
160.0	7.8	7.4	7.0	7.2	7.0	6.2	5.2	5.0	4.4		4.6	4.6
165.0	7.4	7.2	7.0	7.2	6.8	6.2	5.2	5.0	4.4		4.6	4.6
170.0	7.4	7.0	6.8	7.0	6.8	6.2	5.0	4.8	4.4		4.6	4.6
175.0	7.4	7.0	6.8	6.2	6.2	6.2	5.0	4.8	4.4		4.6	4.4
180.0	7.2	6.8	6.6	5.4	5.4	6.2	5.0	4.8	4.4		4.6	4.4
185.0	6.6	6.6	6.6	4.8	4.8	6.0	4.8	4.6	4.4		4.6	4.4
190.0	6.0	6.0	6.6	4.0	4.0	5.2	4.6	4.4	4.4		4.0	4.0
195.0	5.2	5.2	6.4	3.4	3.4	4.6	4.6	4.4	4.4		3.4	3.4
200.0	4.6	4.6	5.8	2.8	2.8	4.0	4.6	4.4	3.6		2.8	2.8
205.0	4.0	4.0	5.0	2.2		3.2	4.0	4.0	3.0		2.2	2.2
210.0	3.4	3.4	4.4			2.6	3.4	3.4	2.4			2.6
215.0	2.6	2.6	3.8			2.0	2.8	2.8				2.2
220.0	2.0	2.0	3.0				2.4	2.4				
225.0			2.4									
230.0			1.8									

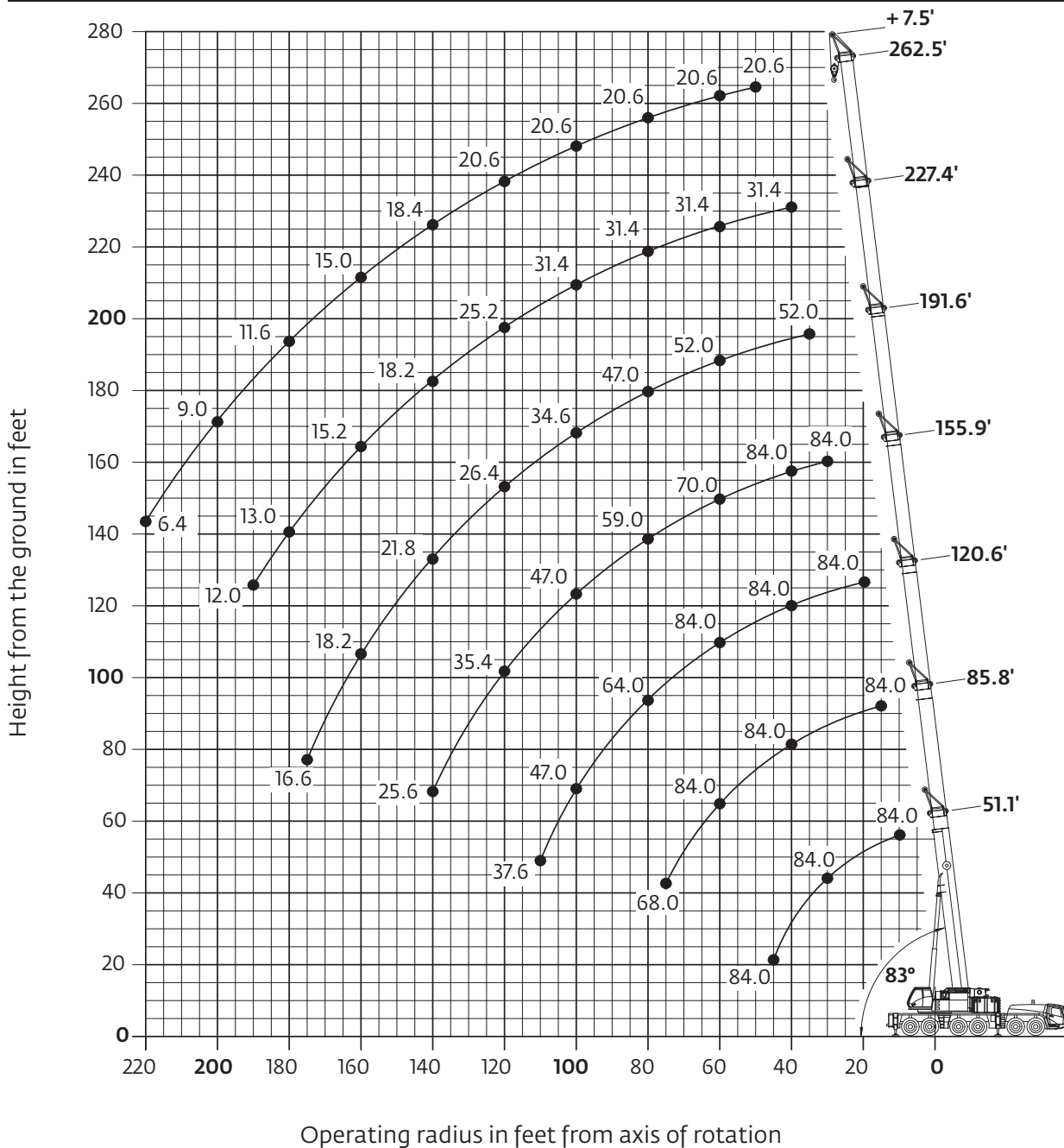
THIS CHART IS ONLY A GUIDE AND SHOULD NOT BE USED TO OPERATE THE CRANE.

Grove GMK6300L The individual crane's load chart, operating instructions and other instructional plates must be read and understood prior to operating the crane.

# Working range

## Heavy duty jib

Heavy duty jib 6.6 ft



Hook heights shown in the working diagram do not consider loaded boom deflection.



# Load chart

## Heavy duty jib

### Fixed angle



15,6 m-80 m  
(51 ft-263 ft)



2 m  
(6.6 ft)



92 500 kg  
(203,900 lb)



27 ft 9 in ft spread  
(100%)



360°



Pounds (thousands)

Feet	51.1' + 6.6'		85.8' + 6.6'		120.6' + 6.6'		155.9' + 6.6'		191.6' + 6.6'		227.4' + 6.6'		262.5' + 6.6'	
	8°	30°	8°	30°	8°	30°	8°	30°	8°	30°	8°	30°	8°	30°
10.0		84.0												
15.0		84.0		84.0										
20.0		84.0		84.0		84.0								
25.0		84.0		84.0		84.0								
30.0		84.0		84.0		84.0		84.0						
35.0	84.0	84.0		84.0		84.0		84.0		52.0				
40.0	84.0	84.0		84.0		84.0		84.0		52.0		31.4		
45.0	84.0			84.0		84.0		80.0		52.0		31.4		
50.0				84.0		84.0		76.0		52.0		31.4		20.6
55.0				84.0		84.0		73.0		52.0		31.4		20.6
60.0			84.0	84.0		84.0		70.0		52.0		31.4		20.6
65.0			84.0	84.0		84.0		67.0		52.0		31.4		20.6
70.0			77.0	77.0		73.0		64.0		52.0		31.4		20.6
75.0			68.0			68.0		61.0		50.0		31.4		20.6
80.0					64.0	63.0		59.0		47.0		31.4		20.6
85.0					59.0	60.0		57.0		43.4		31.4		20.6
90.0					55.0	55.0		55.0		40.0		31.4		20.6
95.0					51.0	51.0		51.0		37.2		31.4		20.6
100.0					47.0			47.0		34.6		31.4		20.6
105.0					43.4			43.4	43.8	32.2		30.4		20.6
110.0					37.6			40.2	40.8	30.2		28.8		20.6
115.0								37.4	37.8	28.2		27.0		20.6
120.0								35.0	35.4	26.4		25.2		20.6
125.0								32.4	32.8	24.8		23.0		20.6
130.0								30.0	30.2	23.0		20.8		20.6
135.0								27.8		22.8	21.4	19.2		19.6
140.0								25.6		21.8	20.4	18.2		18.4
145.0										20.6	19.8	17.4		17.6
150.0										19.4	19.2	16.6		16.8
155.0										18.8	18.6	16.0		15.8
160.0										18.2		15.2		15.0
165.0										17.6		14.6		14.2
170.0										17.0		14.0		13.2
175.0										16.6		13.4		12.4
180.0												13.0		11.6
185.0												12.4		11.0
190.0												12.0		10.2
195.0														9.6
200.0														9.0
205.0														8.2
210.0														7.6
215.0														7.0
220.0														6.4

THIS CHART IS ONLY A GUIDE AND SHOULD NOT BE USED TO OPERATE THE CRANE.

Grove GMK6300L The individual crane's load chart, operating instructions and other instructional plates must be read and understood prior to operating the crane.

# Load chart

## Heavy duty jib

### Fixed angle



15,6 m-80 m  
(51 ft-263 ft)



2 m  
(6.6 ft)



54 500 kg  
(120,100 lb)



27 ft 9 in spread  
(100%)



360°



Pounds (thousands)

Feet	51.1' + 6.6'		85.8' + 6.6'		120.6' + 6.6'		155.9' + 6.6'		191.6' + 6.6'		227.4' + 6.6'		262.5' + 6.6'	
	8°	30°	8°	30°	8°	30°	8°	30°	8°	30°	8°	30°	8°	30°
10.0		84.0												
15.0		84.0		84.0										
20.0		84.0		84.0		84.0								
25.0		84.0		84.0		84.0								
30.0		84.0		84.0		84.0		84.0						
35.0	84.0	84.0		84.0		84.0		84.0		52.0				
40.0	84.0	84.0		84.0		84.0		84.0		52.0		31.4		
45.0	84.0			84.0		84.0		80.0		52.0		31.4		
50.0				84.0		84.0		76.0		52.0		31.4		20.6
55.0				82.0		77.0		72.0		52.0		31.4		20.6
60.0			70.0	71.0		68.0		64.0		52.0		31.4		20.6
65.0			63.0	62.0		61.0		57.0		50.0		31.4		20.6
70.0			57.0	58.0		55.0		51.0		44.0		31.4		20.6
75.0			50.0			49.0		46.0		39.6		31.4		20.6
80.0					48.0	47.0		41.4		35.6		31.4		20.6
85.0					42.8	43.4		37.4		33.8		30.8		20.6
90.0					38.6	39.2		34.0		32.2		29.2		20.6
95.0					34.8	35.4		31.6		30.8		28.0		20.6
100.0					31.6			30.4		29.4		27.0		20.6
105.0					28.6		28.8	29.2		27.0		25.6		20.6
110.0					26.2		26.2	26.8		24.8		23.6		19.2
115.0							23.8	24.4		22.8		21.6		17.4
120.0							21.8	22.2		20.6		19.8		15.6
125.0							19.8	20.2		18.6		18.6		14.0
130.0							18.6	18.4		16.8		17.0		12.6
135.0							17.8		16.6	16.0		15.6		11.2
140.0							17.2		15.8	15.0		14.2		10.0
145.0									14.6	14.4		12.8		8.8
150.0									13.2	13.6		11.4		7.6
155.0									12.0	12.8		10.2		6.6
160.0									11.0			9.0		5.6
165.0									10.0			8.0		4.6
170.0									9.0			7.0		3.6
175.0									8.2			6.0		
180.0												5.2		
185.0												4.4		
190.0												3.6		
195.0														
200.0														
205.0														
210.0														
215.0														
220.0														